



Online Dimensions

WEB & SOFTWARE SOLUTIONS





WHO WE ARE ?



INTERNATIONAL TEAM



8 YEARS



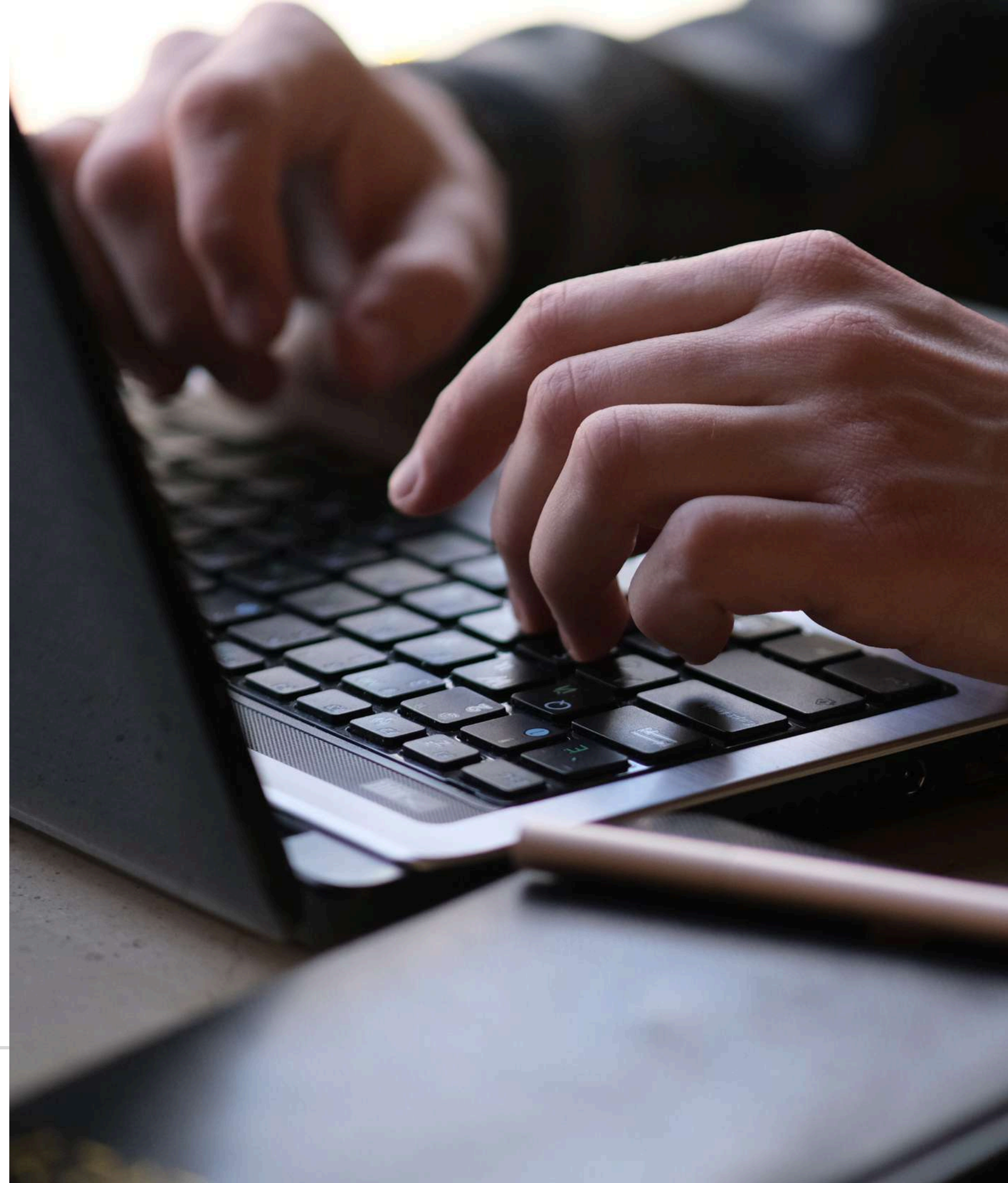
LEBANON



+430 CLIENTS

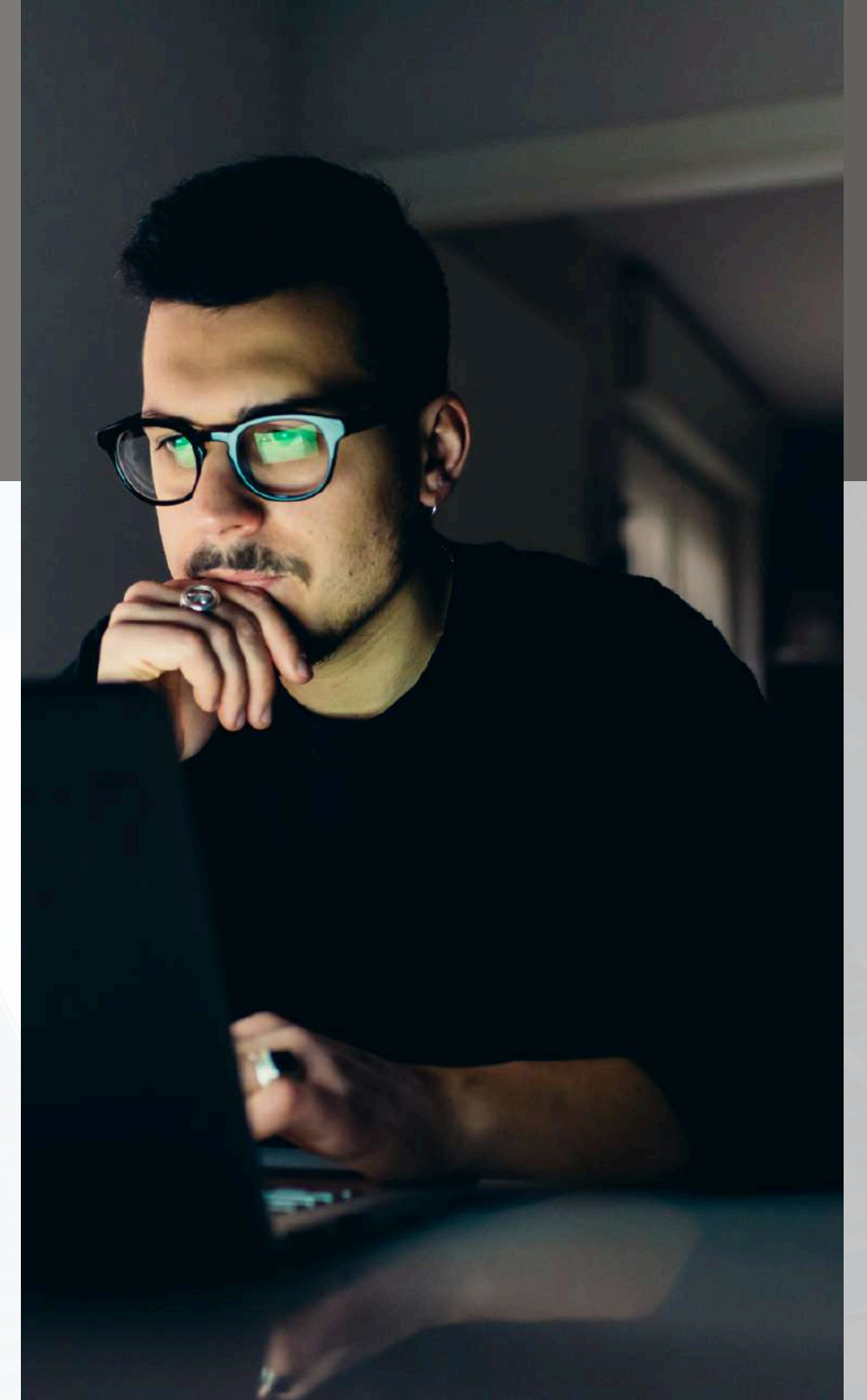


+2000 INTERNATIONAL
PROJECTS

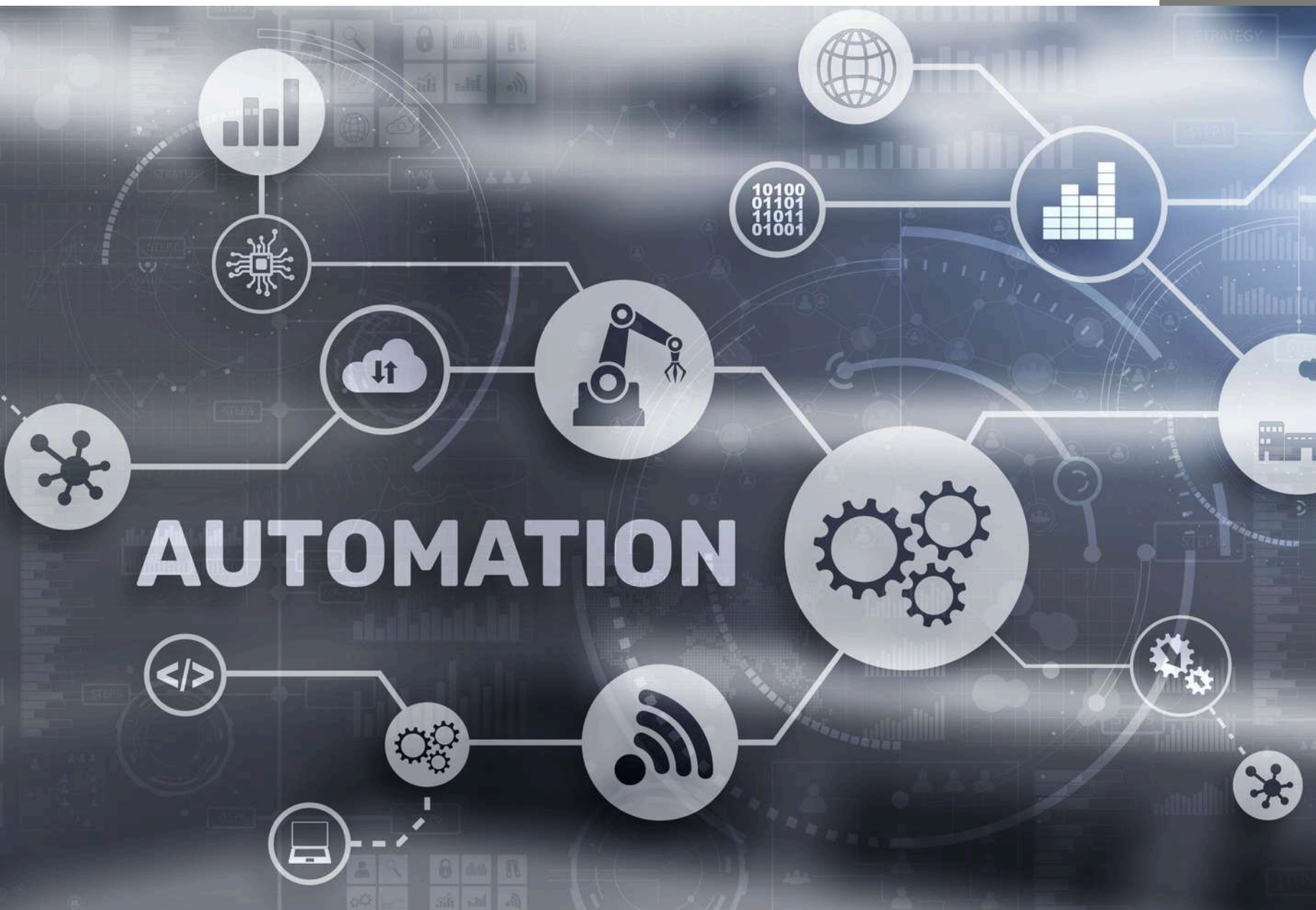


WHAT WE DO?

- BUSINESS AUTOMATION
- WEBSITES
- MOBILE APPS
- E-COMMERCE
- SMART SOLUTIONS
- AI (ARTIFICIAL INTELLIGENCE)



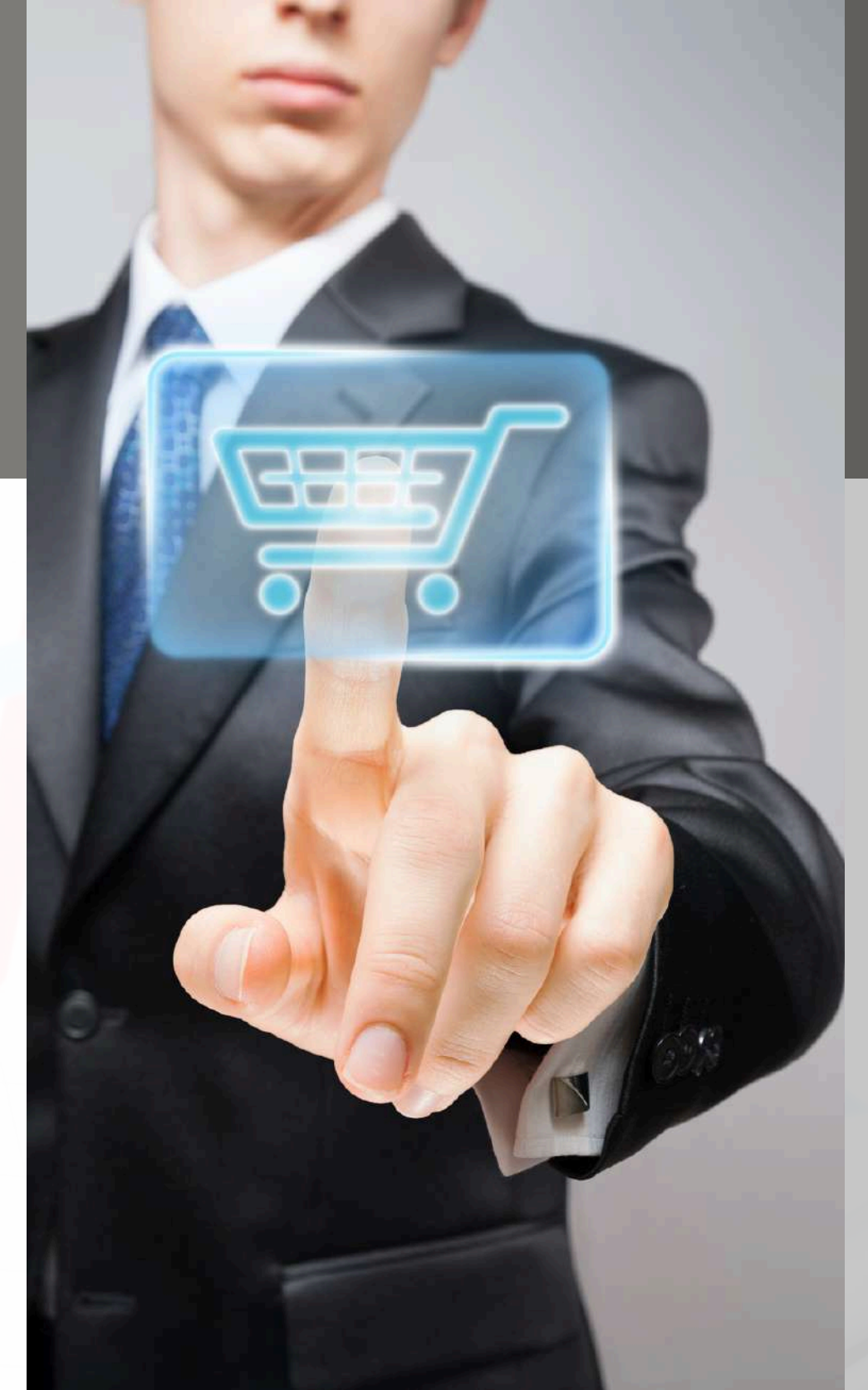
BUSINESS AUTOMATION



- BUSINESS NEED CONSULTATION
- PROCESS ANALYSIS
- PROCESS MAPPING
- CREATE YOUR SOLUTION
- PRODUCT DEVELOPMENT
- PRODUCTS TESTING
- API CREATION AND SYSTEM INTEGRATION

PURCHASE PREDICTOR

We created a purchase predictor for a reputable company in KSA. The valuable insights allowed our client to solve several logistical problems such as maintaining inventory in addition to preparing and dispatching orders to their customers



ORDER PROCESS AUTOMATION

Thanks to the combination of Machine Learning models and smart cloud architecture and modelling, it was possible to automate the processing of orders received in emails and inserting the orders in the client's ERP system.

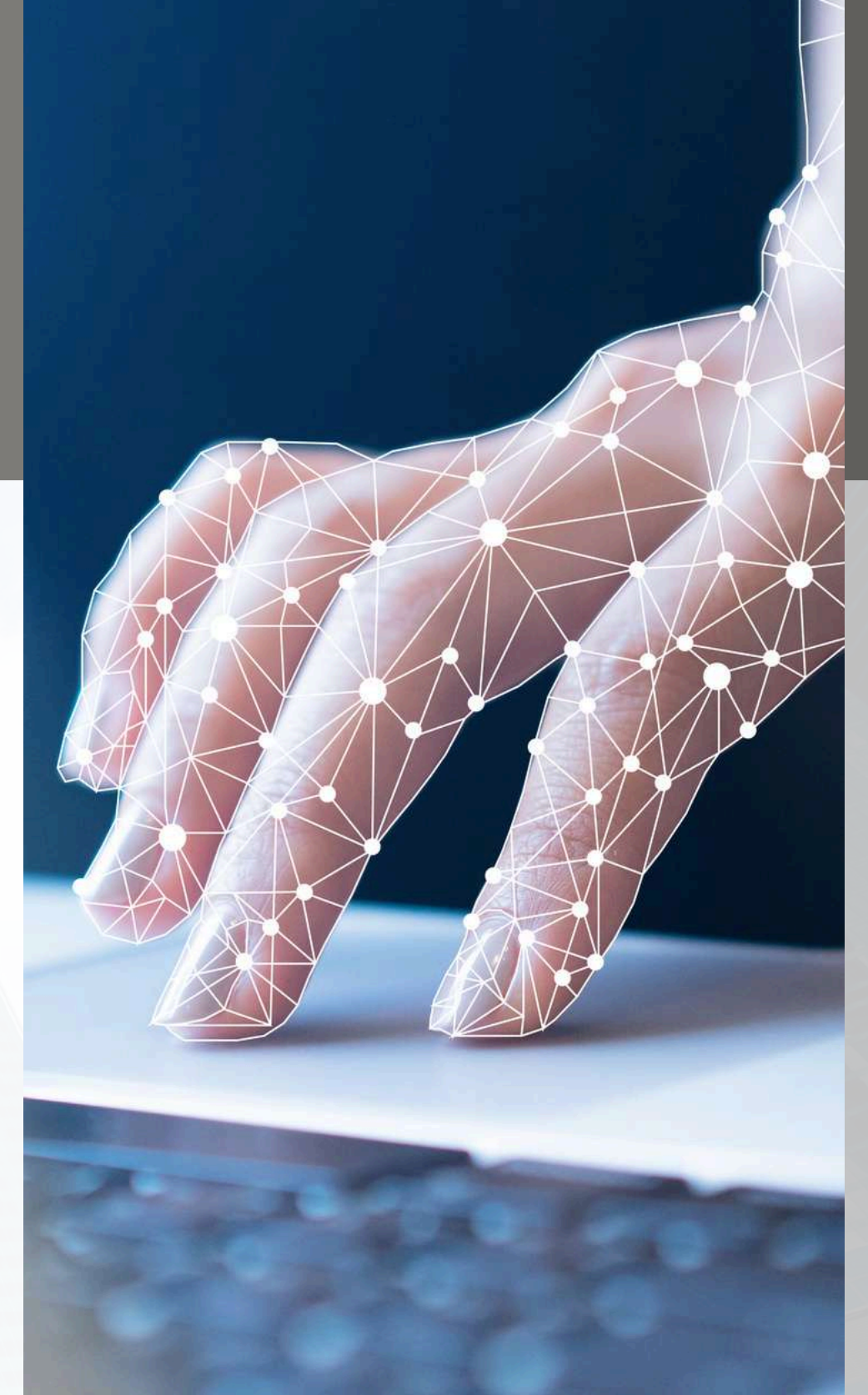
The process that once required five full time employees is now done effortlessly reducing costs and human errors significantly.



RPA

By utilising **RPA tools** we were able to automate:

- insertion of invoices into customer database
- reconcile invoice amounts with reference database
- send daily updates about open invoices



CUSTOM MADE ERP SEAMASTER MARITIME - DUBAI



This ERP automates all the operations for maritime agencies. It handles and guides the employees through the steps of delivering logistics operations, crew change operations and coordination with third parties who provide additional services.

The system also provides means for the maritime agency to manage and operate its internal fleet.

The employees “on the ground” such as drivers have to the mobile app where they receive notifications when they are assigned a task and update when the task is done.

Finally, the client will also have access through both and mobile application to track their orders and to check the statements of account.



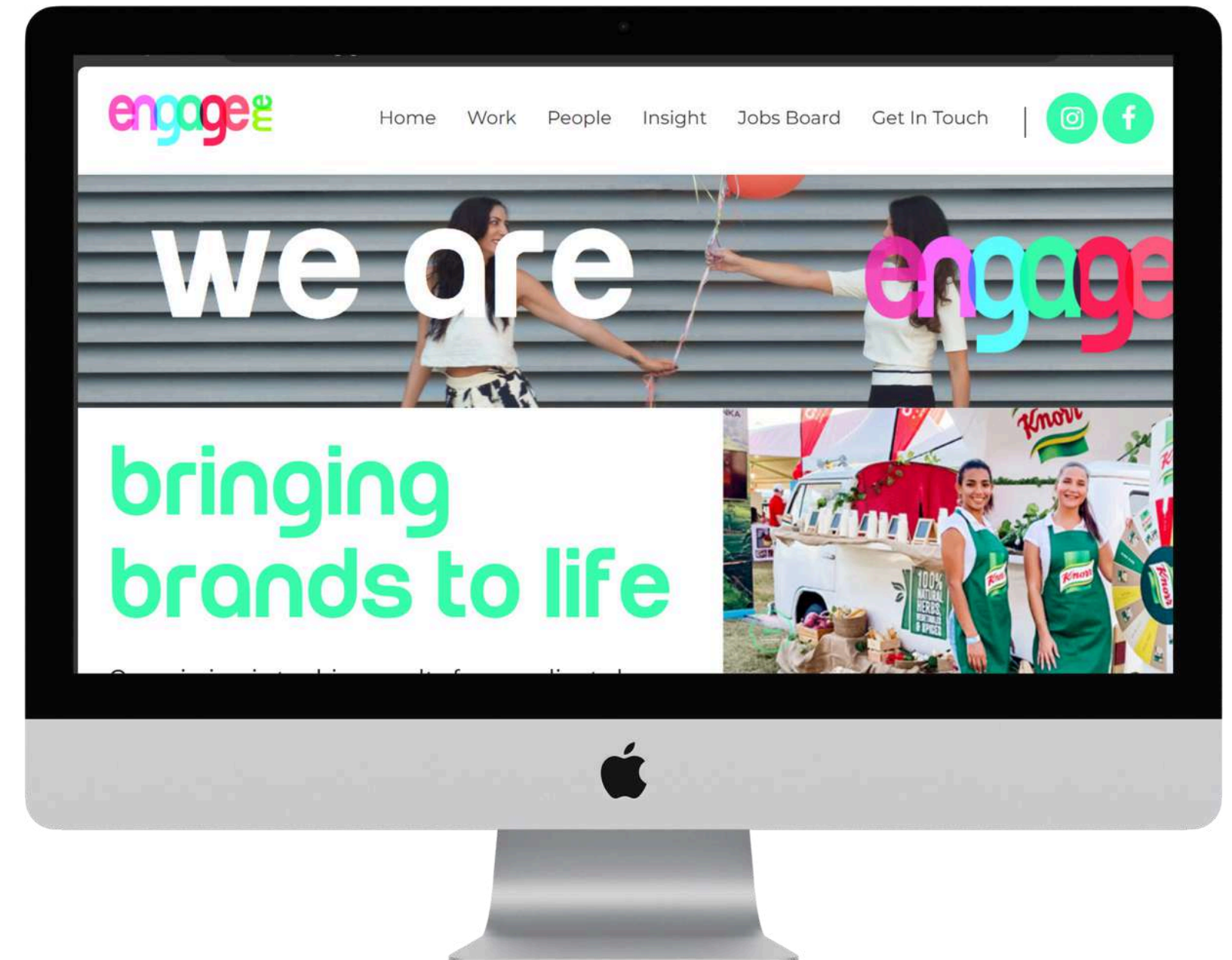
CUSTOM MADE ERP ENGAGE ME - DUBAI



This ERP automates the operations for event staffing agencies. It gives the capabilities to recruit and manage the profiles of potential promoters who have the option to apply through the web interface of the system.

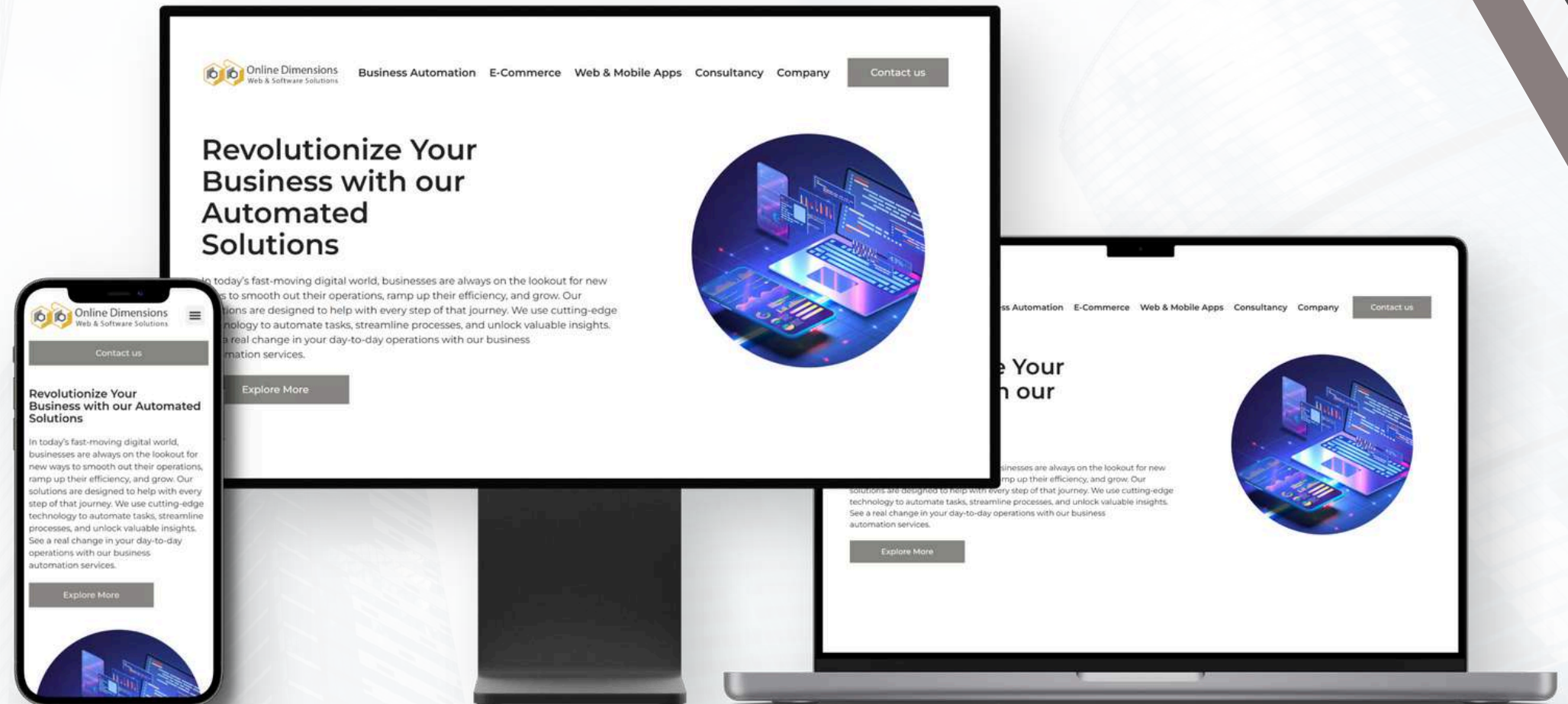
The project managers will find it easy to manage promoters based on availability, skills, performance and client preferences. The system also organizes accounting and payments to promoters, in addition to the inventory of uniforms and props that are lent to promoters on the job.

Finally, a unique reporting dashboard is available for the managers to monitor and share important stats and KPIs.



WEBSITES

- UX WEBSITE DESIGN
- UX WEBSITE REDESIGN
- USER EXPERIENCE TESTING
- LANDING PAGE DESIGN
- RAPID WEB DESIGN
- ADA COMPLIANCE SERVICES
- WEBSITE DEVELOPMENT
- E-COMMERCE DEVELOPMENT
- CMS DEVELOPMENT (STANDARD & CUSTOMIZED)



WEBSITE BIDFOOD HOME

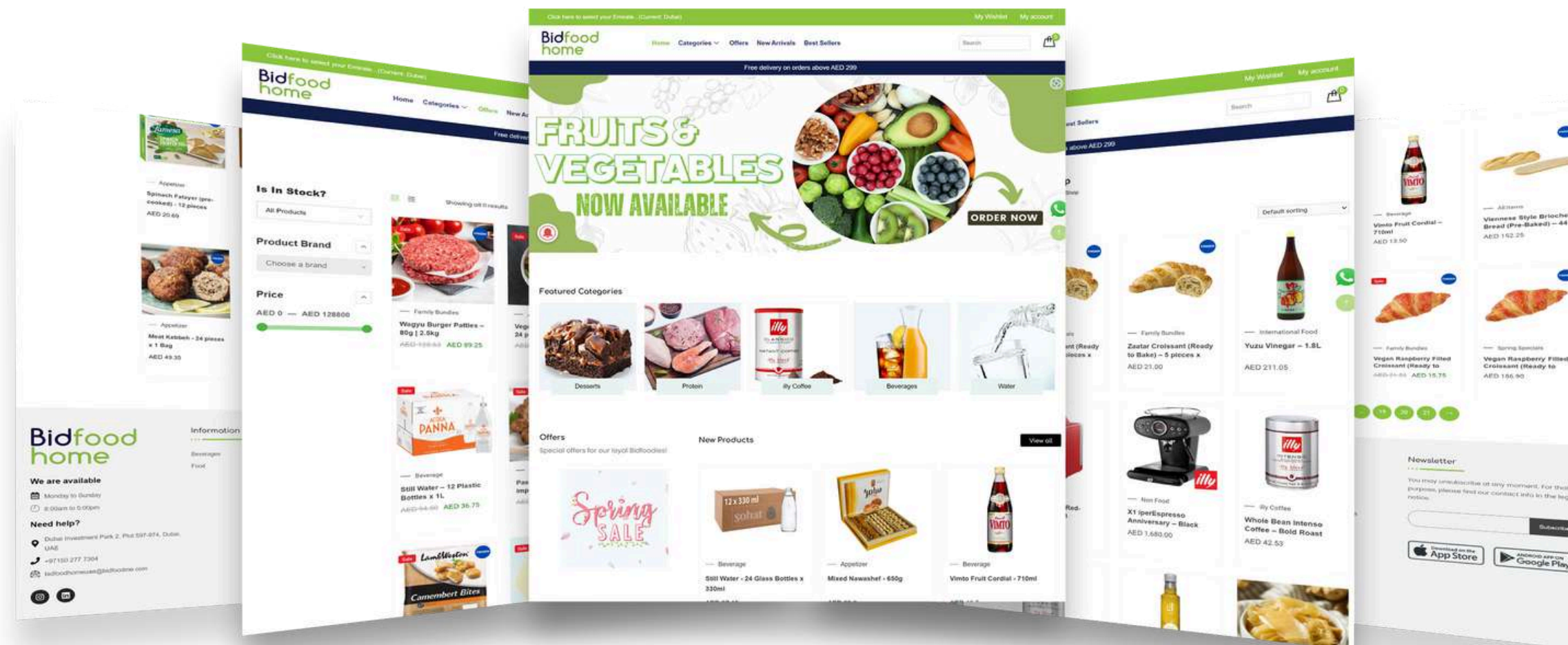
Bidfood
home

Dubai

Bid Food Home

<https://bidfoodhome.ae/>

Bidfood at Home is an online food and beverage delivery platform that brings the restaurant experience to you. Appetizers, Main Courses, Desserts, and everything in between, recreate unforgettable dine-in experiences with our ever-growing product range.



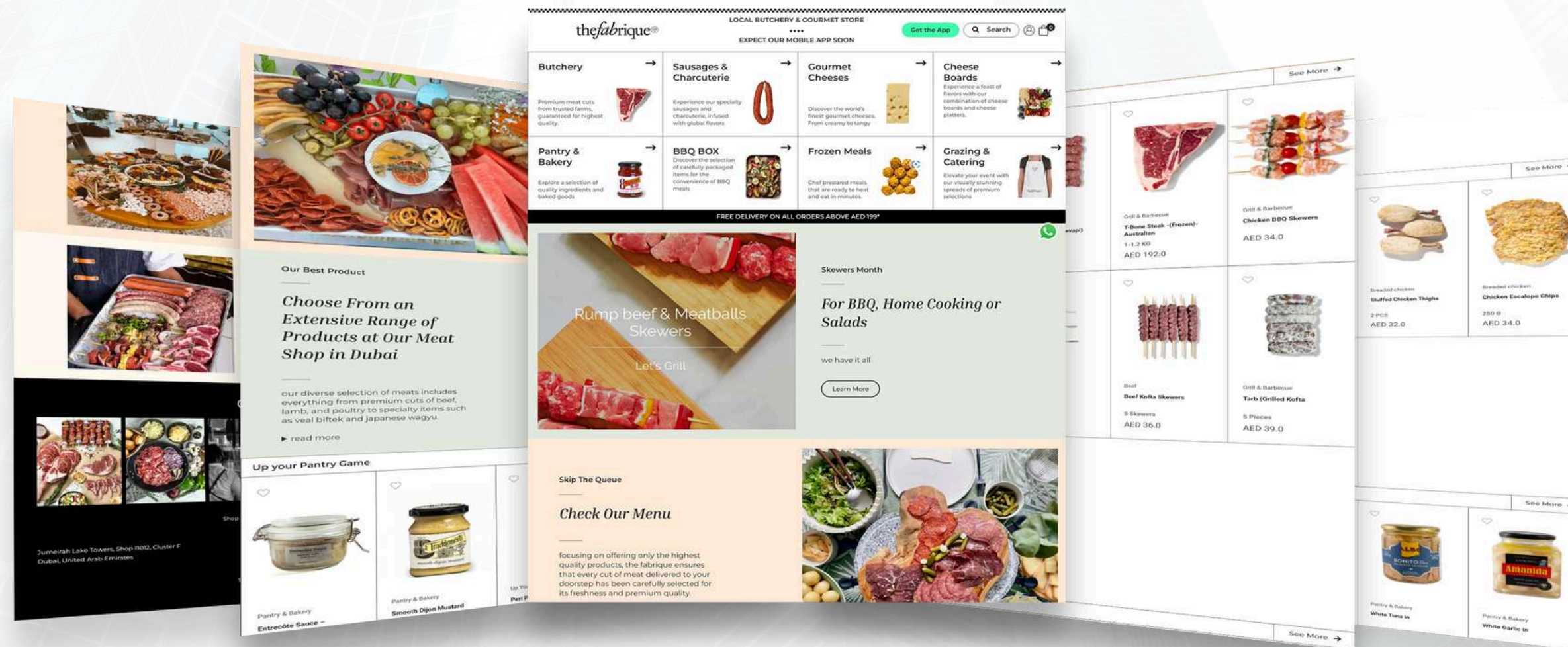
WEBSITE THE FABRIQUE

THE FABRIQUE

<https://thefabrique.ae>

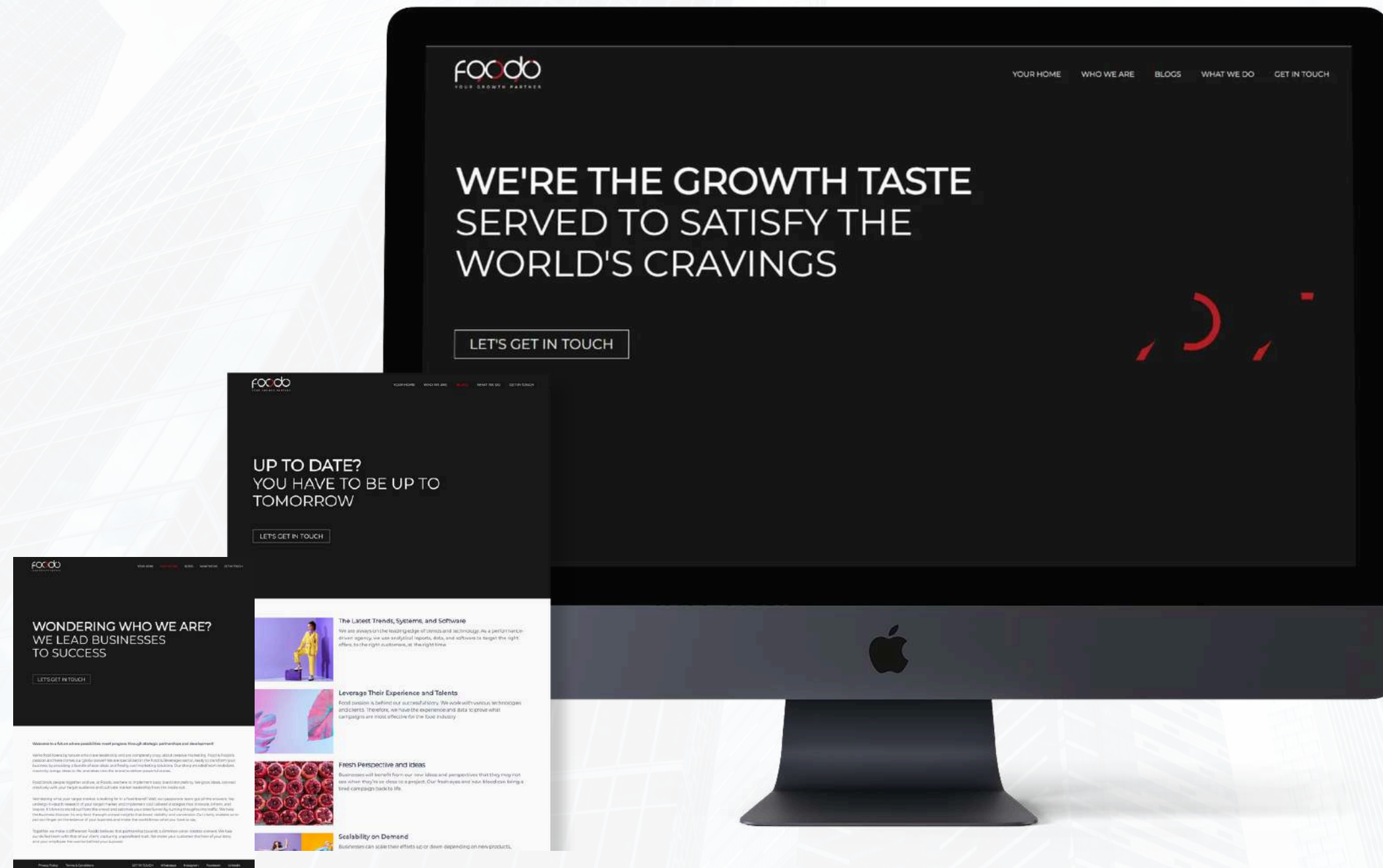
thefabrique®

Offers a wide range of fresh and high-quality meat products, including beef, chicken, lamb, seafood, and more. Check our website for the complete product list.



WEBSITE FOODO GLOBAL

Digital Marketing agency. We're food lovers by nature who crave leadership and are completely crazy about creative marketing. Food is Foodo's passion and here comes our global power!



FOODO GLOBAL
<https://foodoglobal.com>

WEBSITE YARD WPT

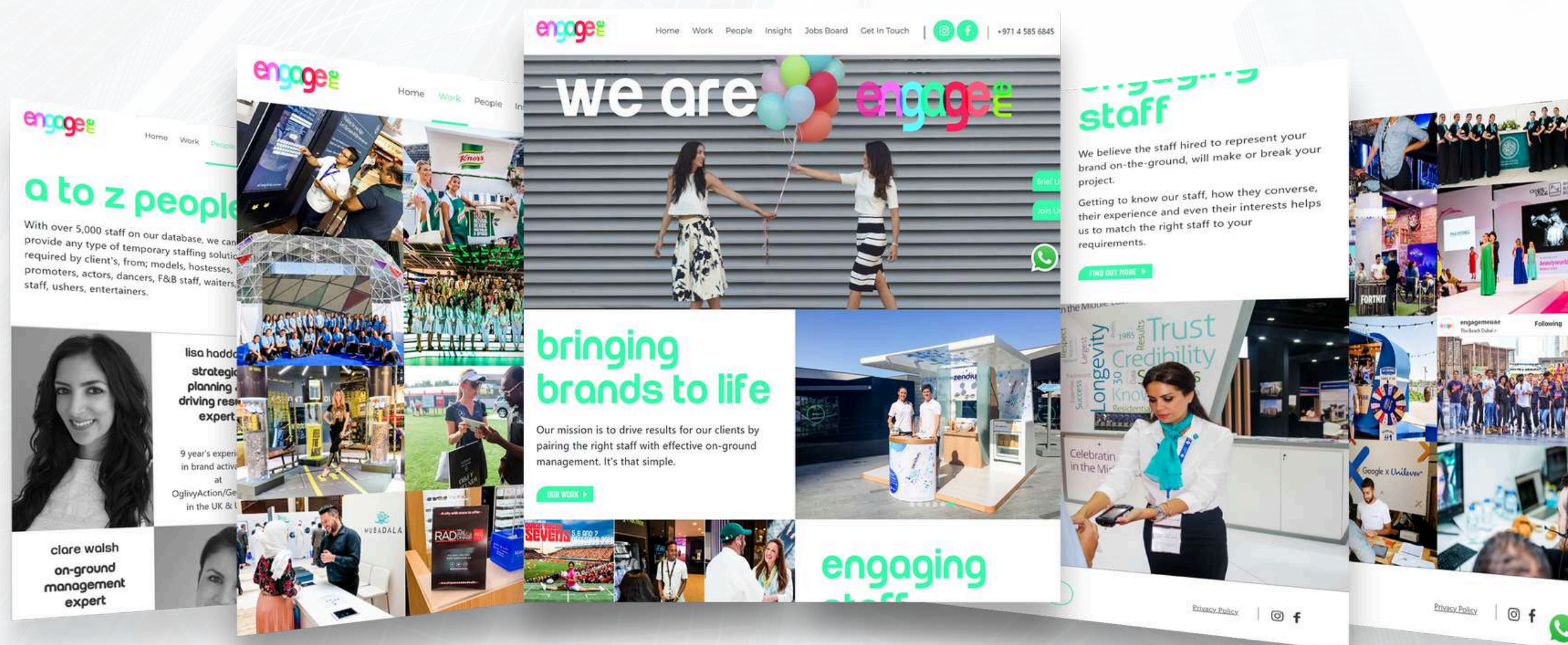


Our company offers comprehensive wood processing and trading services tailored to meet the needs of various industries and individual customers. We provide high-quality wood products, including raw materials and finished goods, sourced from reliable suppliers.

Wood processing & Trading
www.yardwpt.com

WEBSITE ENGAGE ME

Our mission is to drive results for our clients by pairing the right staff with effective on-ground management. It's that simple.



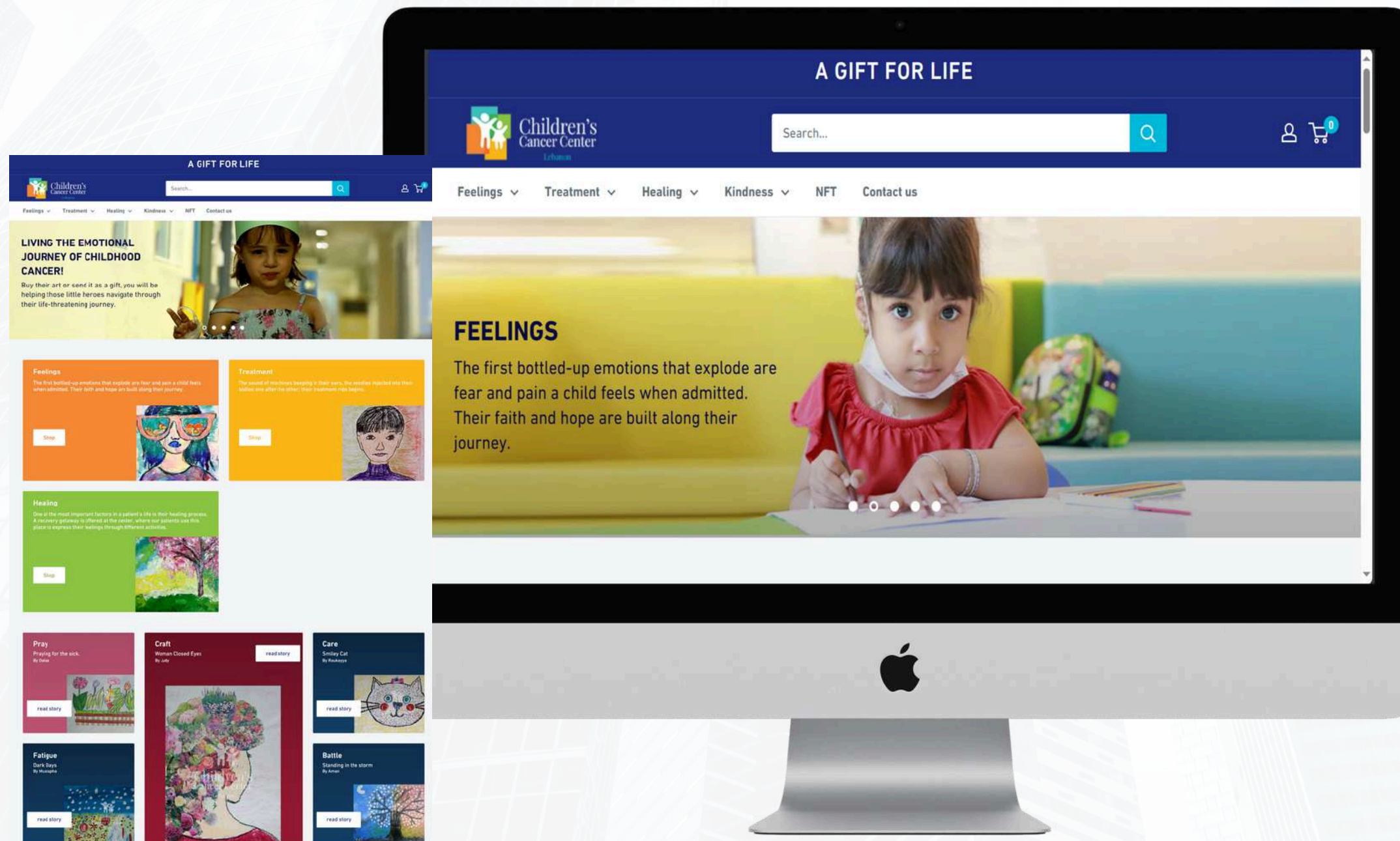
engage

ENGAGE ME

<https://engage-me.me>

WEBSITE GIFT FOR LIFE

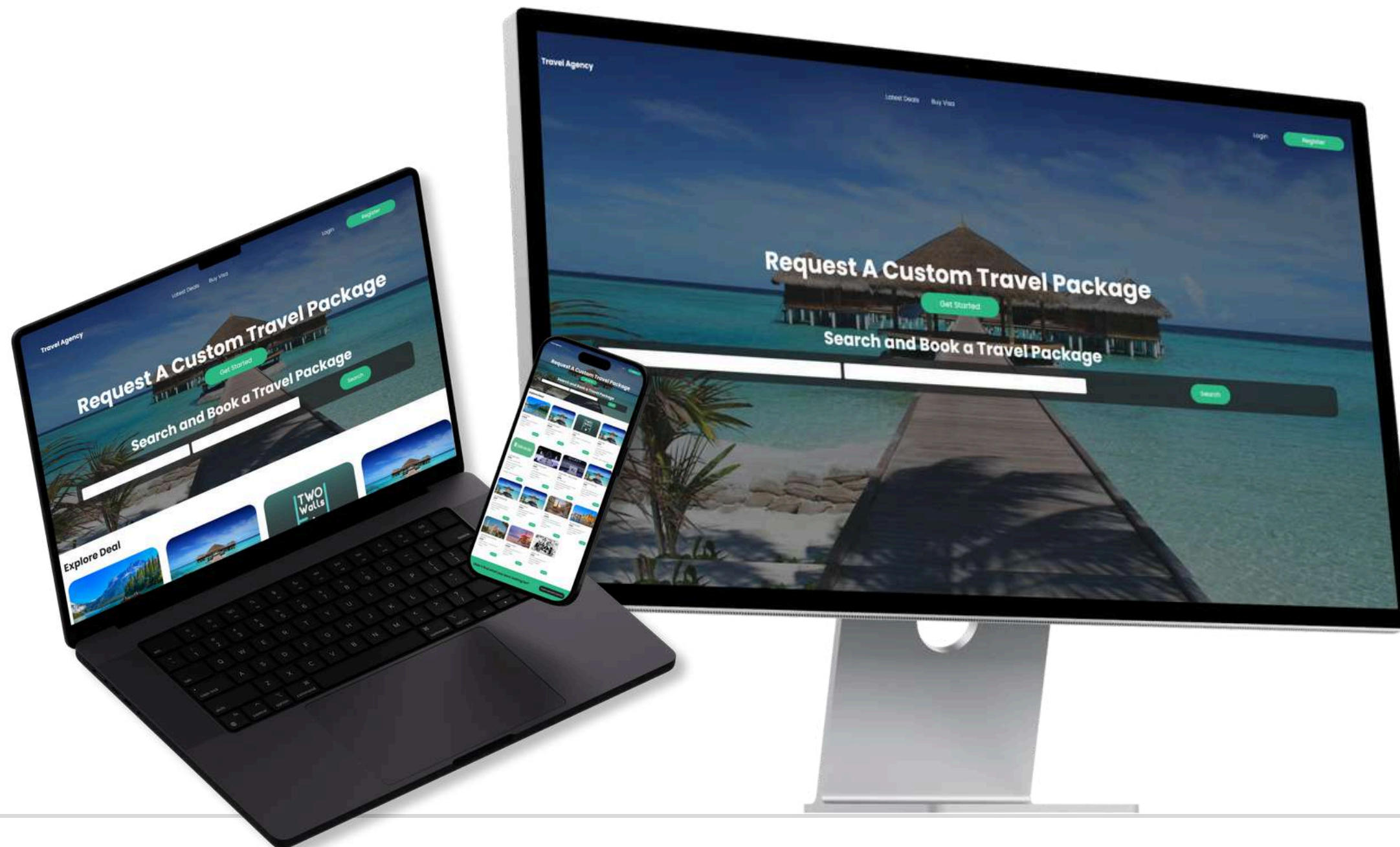
CCCL has been saving lives and celebrating hope for the last 20 years, and on this occasion, renews its vows and commitment to serving and advancing childhood cancer control.



GIFT FOR LIFE
<https://giftforlife.cccl.org.lb/>

WEBSITE TRAVEL AGENCY

We offer a wide range of travel services designed to make your journey enjoyable and hassle-free. Whether you are planning a relaxing vacation, a business trip, or an adventurous getaway, our experienced team is here to assist you every step of the way.



Travel Agency
<http://51.195.218.87>

WEBSITE EFS

A simple website for an Aluminium Company in Lebanon, with a user friendly backend, where the admins can add/edit content anytime.



**Engineering Facade
Solutions Lebanon**
<http://efs.com.lb/>

WEBSITE ASK CONSULT

A two languages website (English / Arabic) for a consultant compnay based in Lebanon, with a custom made CMS.



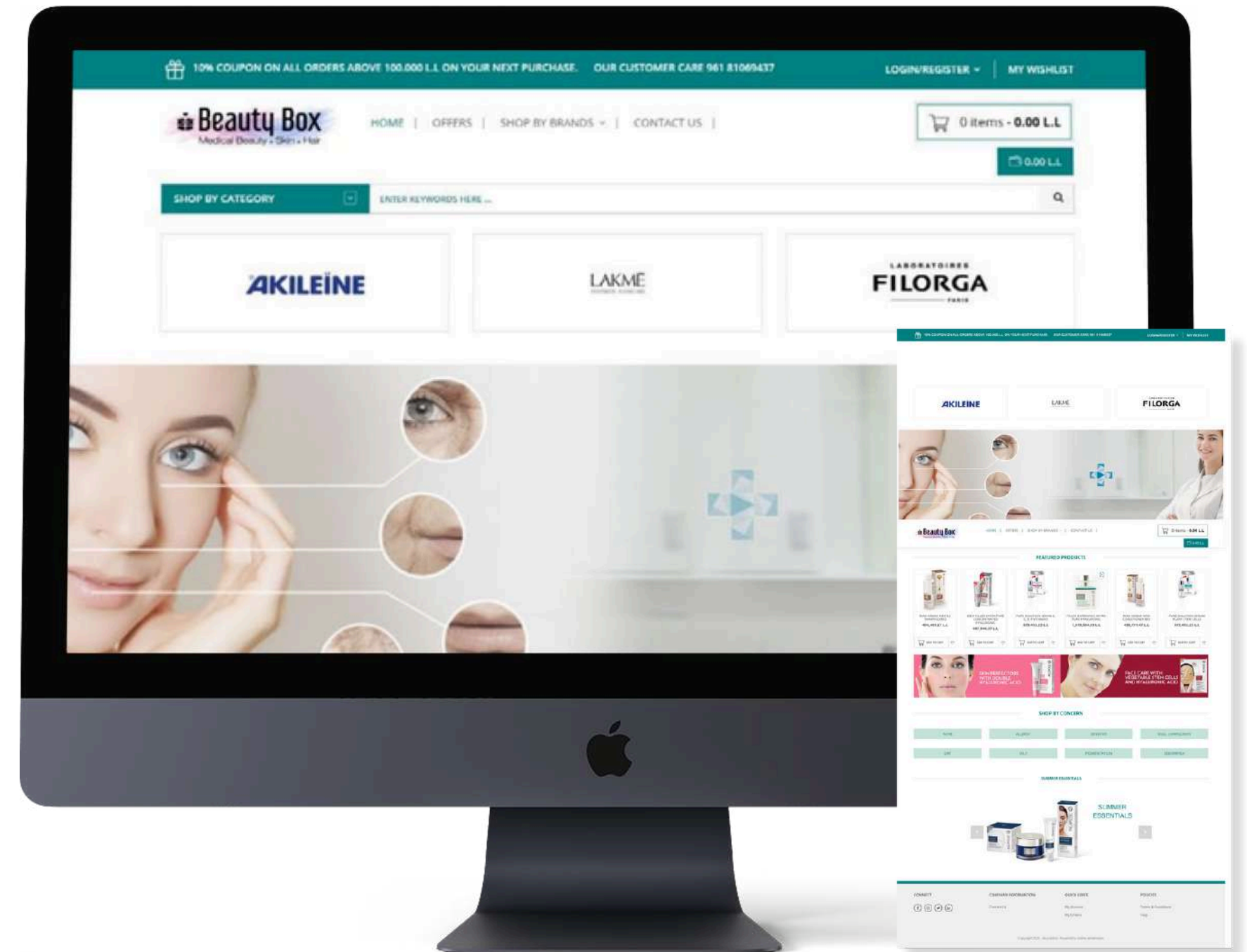
ASK Consult Lebanon
www.askconsultt.com

WEBSITE BEAUTY BOX LB

Beauty Box Lebanon
www.beautyboxlb.com

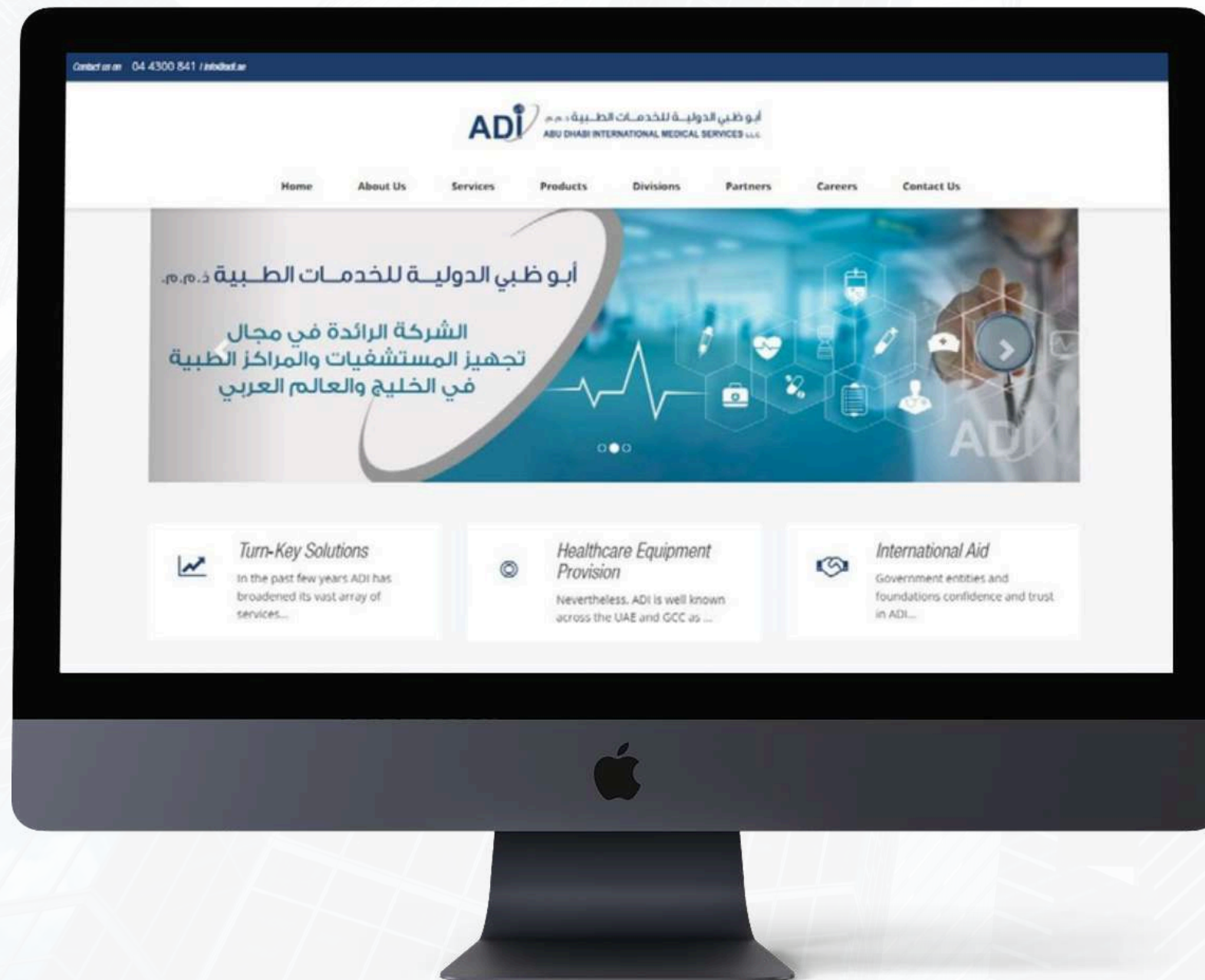
A Lebanese E-commerce website, selling pharmaceuticals products, linked to an inventory, a sales and an accounting system.

The admins use the backend to track and update orders, and send notifications for the customers.



WEBSITE ADI

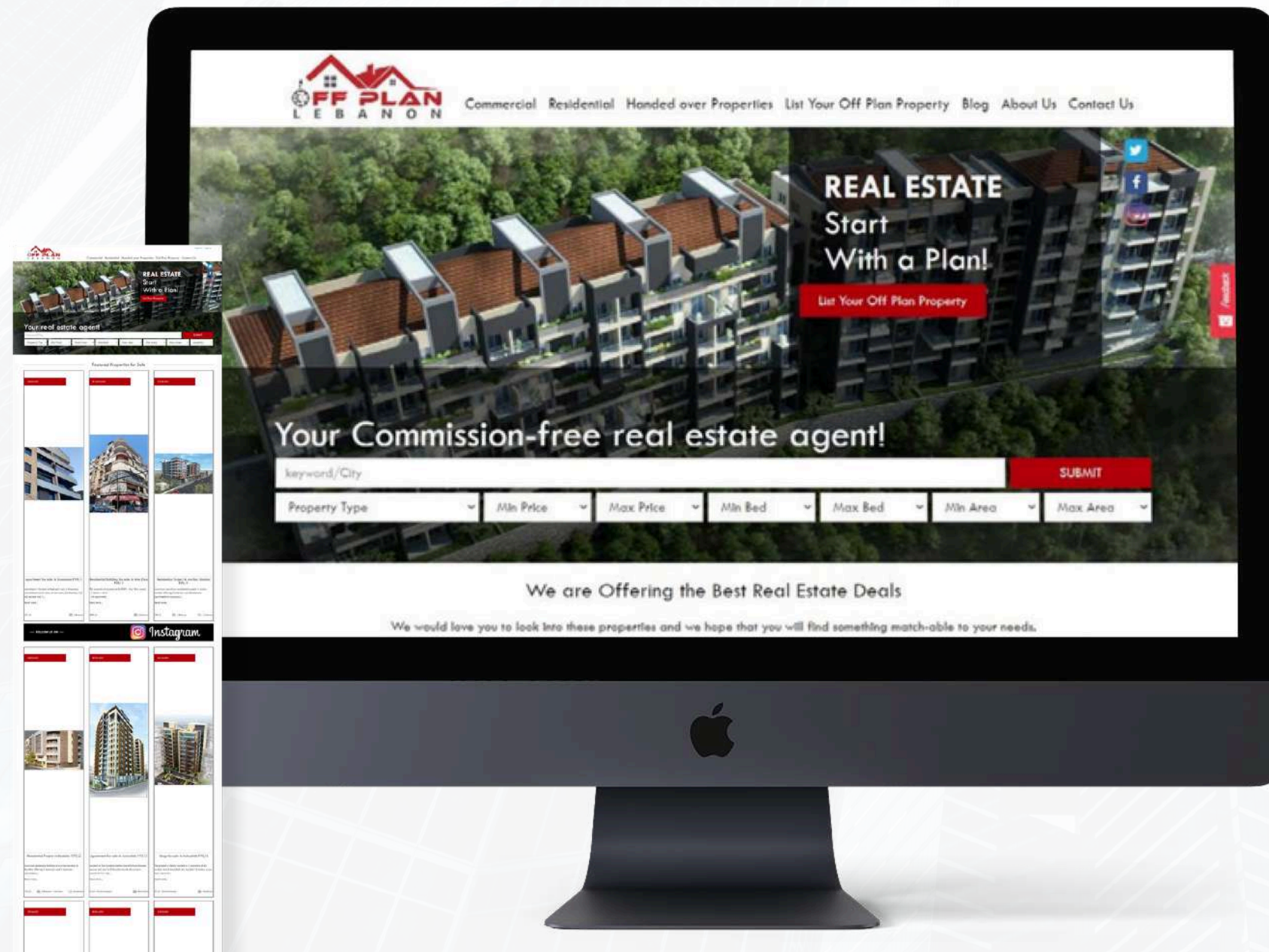
ADI is recognized for its extensive range of healthcare products and services, but the firm's primary significance goes back to being the authorized supplier of GE Healthcare systems.



**Abu Dhabi International
Medical Services (ADI)
UAE**

<https://www.adi.ae/Test2/>

WEBSITE OFF PLAN LEBANON



Buying off plan property simply means purchasing a property from a sales brochure from the developer during the construction of a project. It i... Read more

Off Plan Lebanon
Lebanon - Dubai
www.offplanlebanon.com

MOBILE APPLICATIONS

- REQUIREMENT ANALYSIS
- MOBILE APP CONSULTING
- WIRE FRAMING
- DESIGN
- UI/UX APP DESIGN UI/UX
- APP REDESIGN
- USER EXPERIENCE TESTING
- ADA COMPLIANCE SERVICES
- LANDING PAGE DESIGN



MOBILE APPS TYPES

- iPhone App Development
- Android App Development
- Enterprise App Development
- Cross-Platform App Development



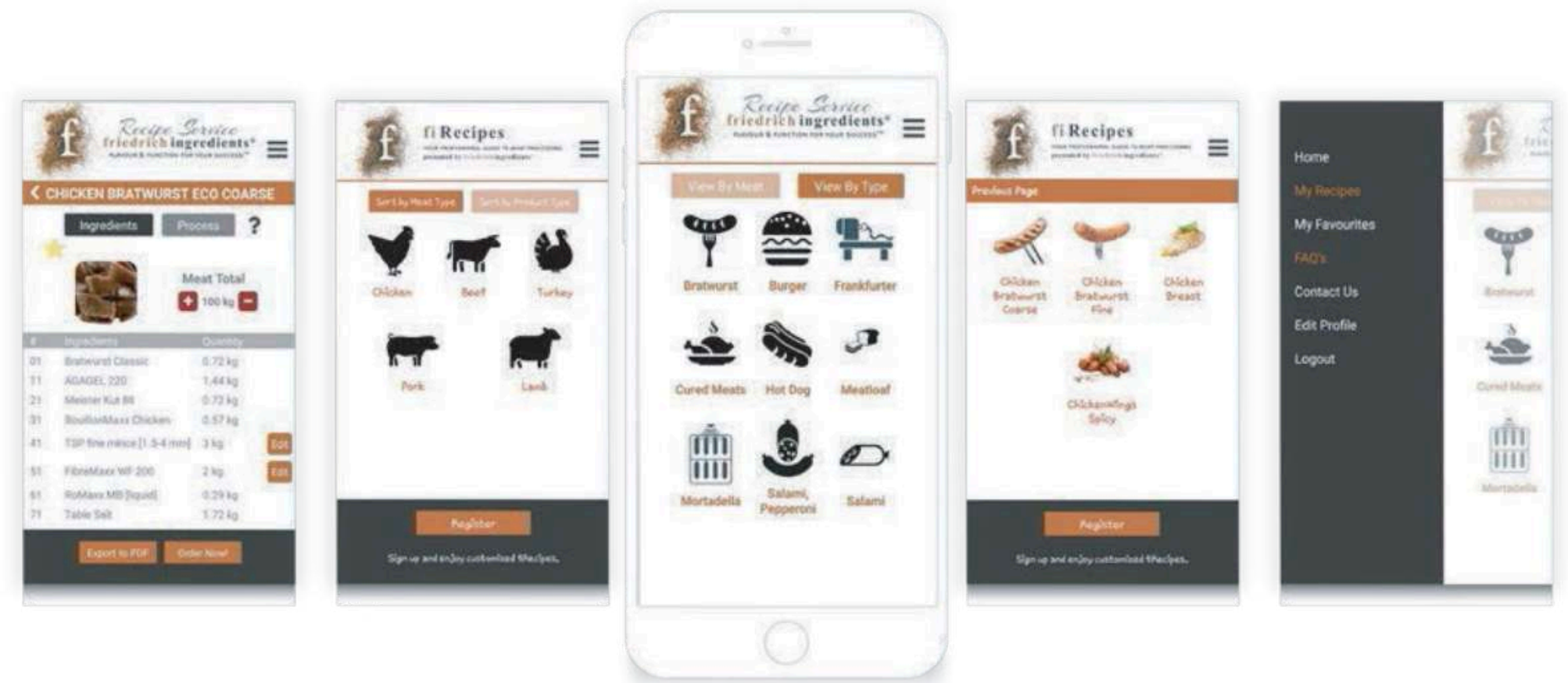


MOBILE APPS FI RECIPE

Friedrich Ingredients Germany - Dubai

The application was built for a meat whole seller in order to get more insights about the taste of clients. As the name indicates the app contains an impressive number of recipes that clients can use to prepare their meats.

The clients can also update and create their own recipes on the app, where they are advised on the recommended ratios to add for each ingredient.



<https://goo.gl/sFhGX7>

<https://goo.gl/mG3P3c>



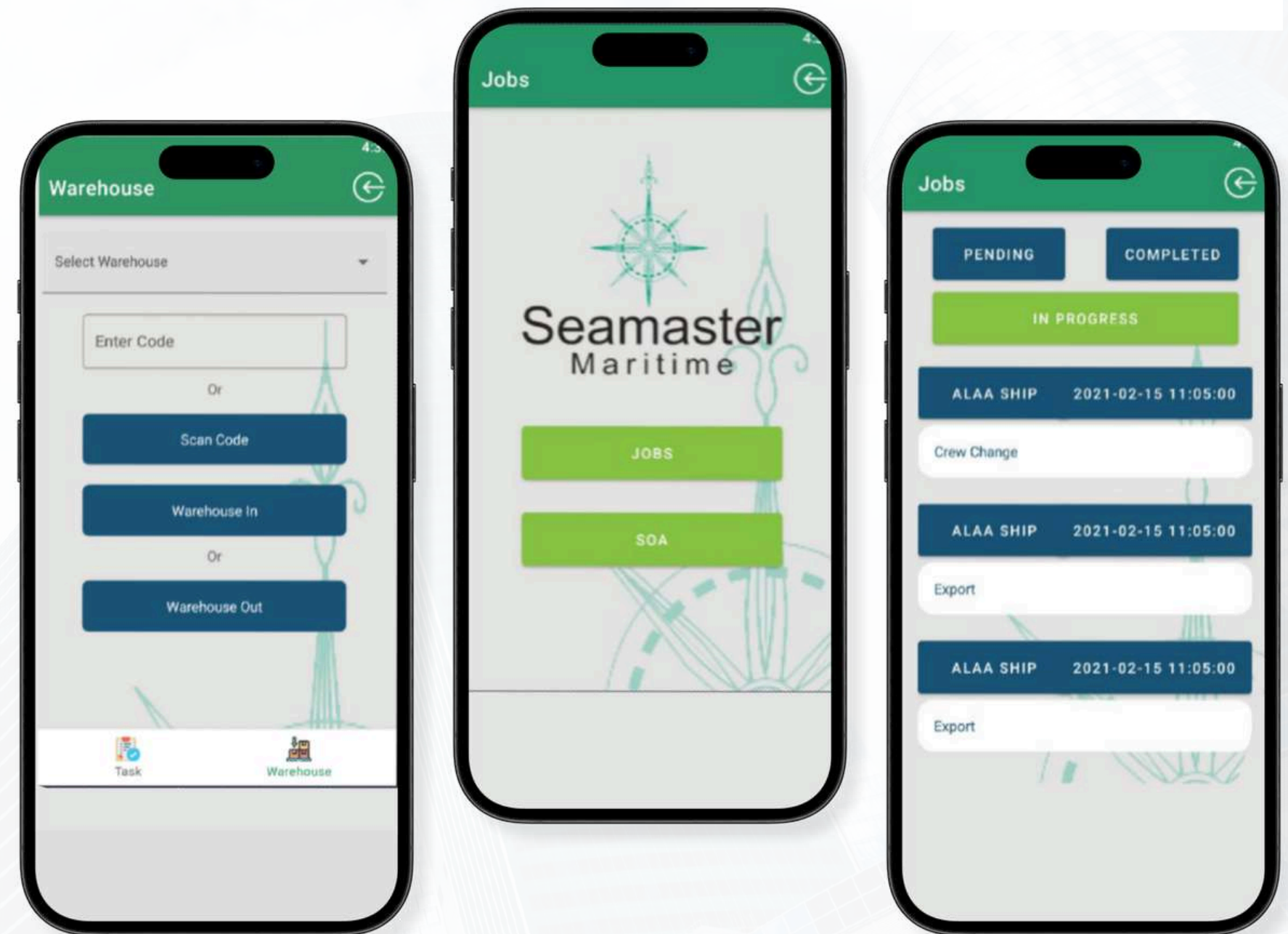
MOBILE APPS SEAMASTER MARITIME

The mobile application is complementary to the maritime ERP system and has two kinds of users, clients and employees. The clients use the mobile application to stay up to date about the status of their orders.

Employees rely on the app to receive newly assigned tasks and to provide real time reporting on the work that they have completed.

Seamaster Maritime UAE

Not for public use: Downloaded by the company employees from the portal.





MOBILE APPS LIWA

Liwa KSA

A mobile app for Freelancers and Employers in KSA. The Employers can post jobs, and nearby freelancers can apply to the jobs. The app has a full telecom and chat module, in addition to an integrated payment gateway.

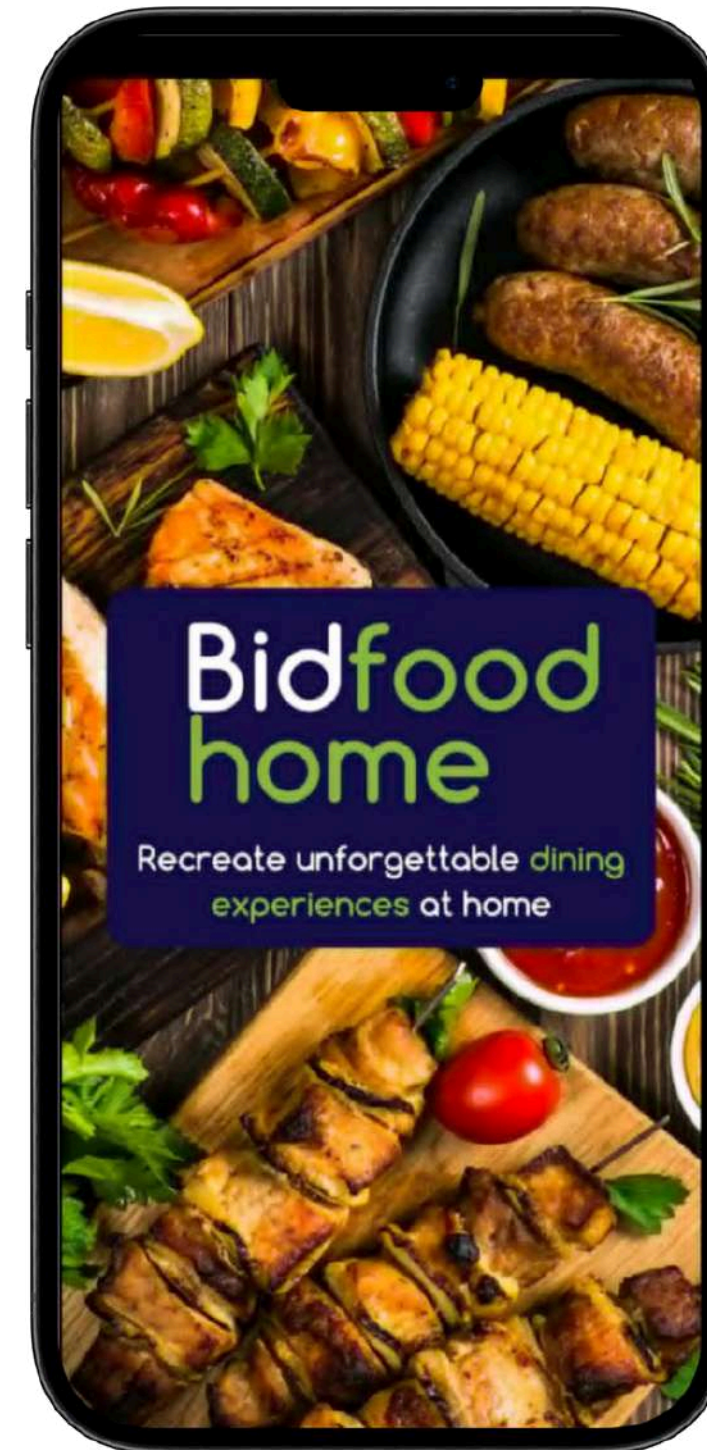
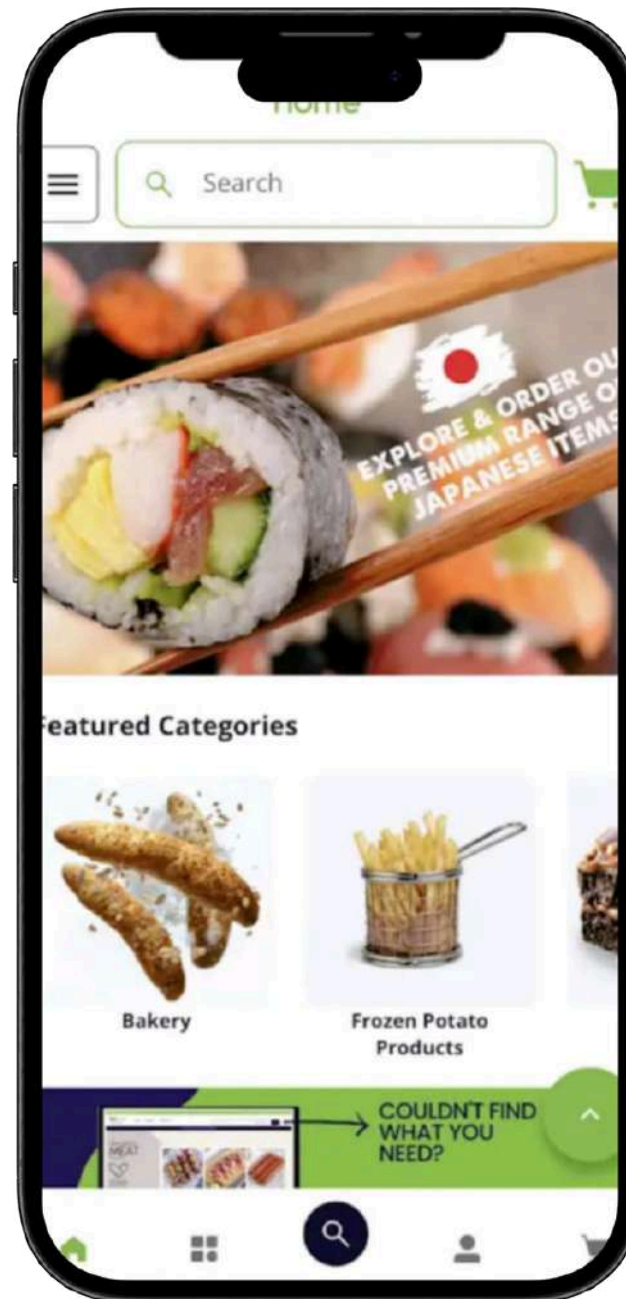




MOBILE APP BID FOOD

Bidfood at Home is an online food and beverage delivery platform that brings the restaurant experience to you. Appetizers, Main Courses, Desserts, and everything in between, recreate unforgettable dine-in experiences with our ever-growing product range.

Bidfood
home



INTERNET OF THINGS

- Consultation
- Setup and Business Analysis
- Budget recommendations
- Requirement Analysis Design and Architecture
- UI / UX design
- Hardware Recommendations
- API Design
- IOT MVP Creation

The Internet of Things (IoT) describes the network of physical objects “things” that are embedded with sensors, software, and other technologies for the purpose of connecting and exchanging data with other devices and systems over the internet.





The diagram illustrates an IoT system architecture. At the base is a network of interconnected nodes, representing sensors and devices. From this network, several vertical lines rise, connecting to various functional blocks. On the left, a column of icons represents 'IoT App Development' and 'Connectivity of Legacy Equipment', including a laptop with binary code, a server, a lightbulb, a gear, a smartphone, and a calendar. In the center, a large circular arrangement of icons represents the core IoT ecosystem, featuring a lightbulb, a dollar sign, a lightbulb, a gear, a person, a globe, a rocket, a handshake, a gear, a globe, a person, a gear, a lightbulb, a dollar sign, and a lightbulb. On the right, another column of icons represents 'IoT Testing & Support' and 'IoT and AI', including a server, a lightbulb, a gear, a person, a globe, a rocket, a handshake, a gear, a globe, a person, a gear, a lightbulb, a dollar sign, and a lightbulb. At the top right, a small grid of icons and binary code (00101, 11001) is shown.

IoT App Development

**Connectivity of
Legacy Equipment**

IoT Testing & Support

IoT and AI

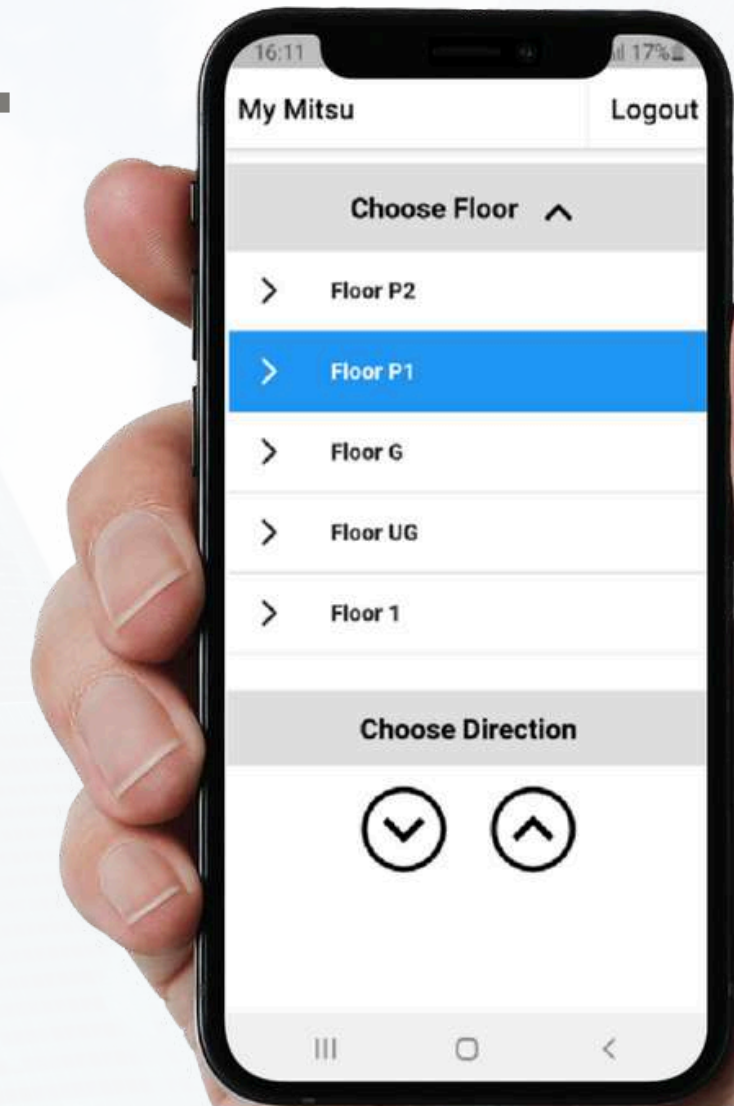
An IoT system consists of sensors/devices which “talk” to the cloud through some kind of connectivity. Once the data gets to the cloud, software processes it and then might decide to perform an action, such as sending an alert or automatically adjusting the sensors/devices without the need for the user.

IOT MITSULIFT ELEVATOR CONTROL

Mitsulift Lebanon SAL Mitsulift Jordan LLC
Lebanon - Jordan <https://www.mitsulift.com/>

It is possible through this app to enjoy the convenience of ordering your elevator from your mobile application early without having to wait for it to come.

Ordering through the app also protects the user from the exposure of touching contaminated surfaces on the elevator buttons, especially in the covid 19 pandemic.



IOT VEHICLE TRACKING

Wasl - KSA <https://www.elm.sa/en/e-servic-es/Pages/wasl.aspx/>
Technovision - Lebanon <http://www.technovisionlb.com/>

Vehicle Tracking Software.

A Reliable Solution For Tracking And Tracing Your
Drivers.



IOT TOWER E-DIRECTORY

Swiss Tower Dubai

<https://www.jlt-dubai.com/jumeirah-lake-towers-dubai-project/-Jumeirah-Lake-Towers/Swiss-Tower1-032.html>

- Listing of all the companies in the Tower
- Touch Keyboard for search
- Live weather, date and time
- Available rent spaces
- Information about each company
- Elevator selection based on company floor



CASE STUDY - SMART SOLUTIONS MAIDS - MATCHING SERVICES

(Algorithms - CRM Integration)

Dubai <http://maids.cc/>

PROBLEM TO SOLVE:

One of our clients has a cleaning service where customers book cleaning appointments online. They can select either morning session or afternoon session. As a result each cleaner will leave the house in the morning, head to the morning session, and go to the afternoon session before heading back home. The cleaners were complaining from the amount of time spent in public transportation, and the client was complaining from the additional costs incurred on transportation.

To solve the issue we developed an algorithm that combined Hungarian algorithm with dynamic programming to optimize the transportation time or cost (as preferred by user).

PROBLEM: high costs and long times spent in public transportation

Solution: design and implement an algorithm using combination of Hungarian algorithm and dynamic programming

PLATFORM: coding was done on Salesforce (client's CRM system) and it was completely integrated to read bookings, customer and cleaners' information.

Result: Reduced daily cost and time



CASE STUDY - SMART SOLUTIONS REVERSE BIDDING (MODELLING – ALGORITHMS)

UK <https://www.slidr.com/>

An E-commerce website with a special twist. In this platform the user will see the old price of the products. To uncover the new price, which is guaranteed to be less than the old price, the user needs to pay a very small percentage of the original price. Once the new “lower” price is uncovered, the user has few seconds to make a decision: Either to buy the product at the new price, or wait hoping that other users will keep uncovering the price driving it to a low level. The owner of the site wanted to maximize revenues as much as possible.

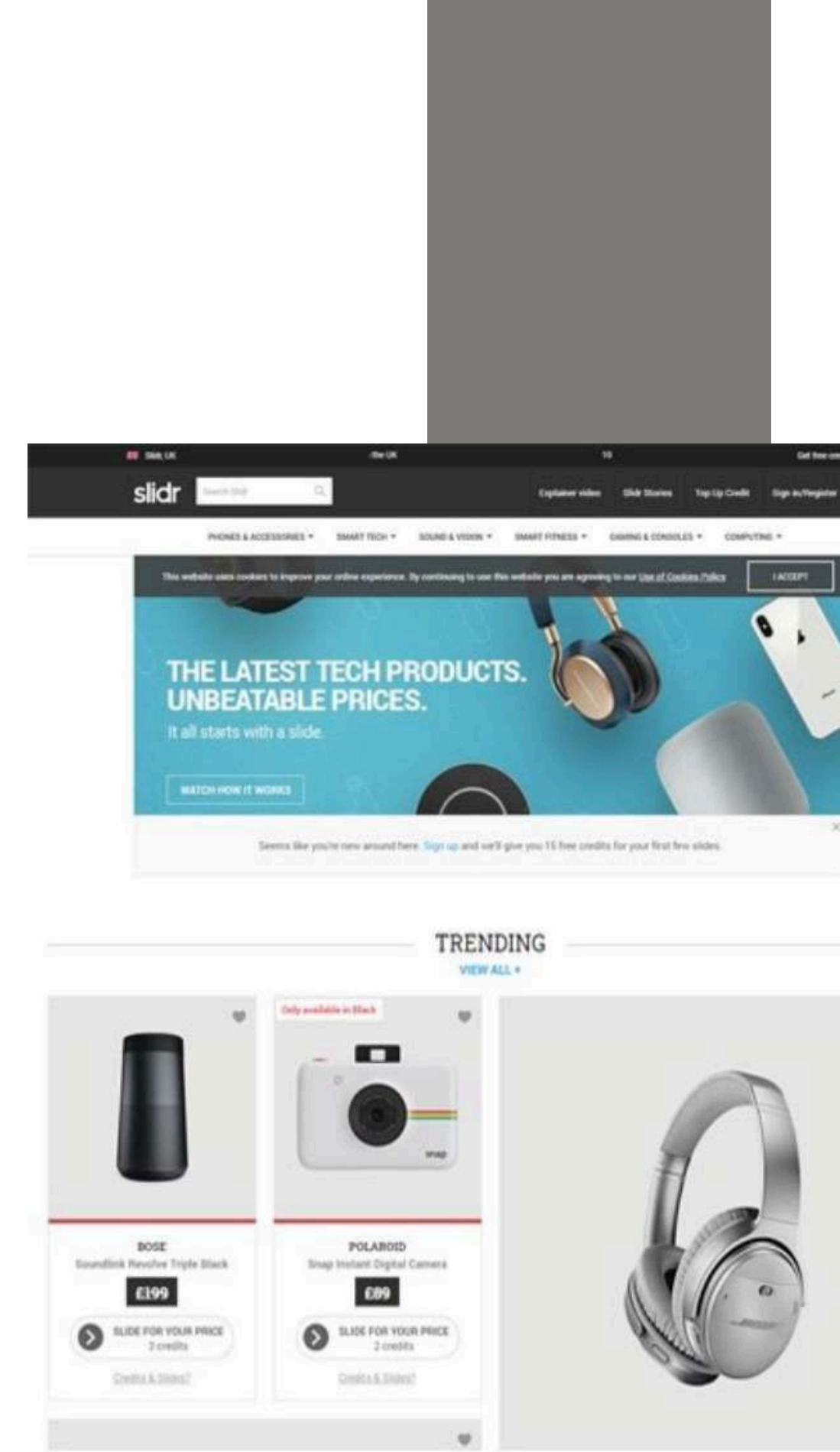
We developed a model taking several aspects of consumer behaviour analytically, and ran a genetic algorithm optimization on top of the model. The output was the amount of dollars to drop upon each revealing of a product.

Problem: Client wanted to increase revenues.

Solution: Built a complete model of consumer behaviour (in collaboration with experts in the field)

Platform: Modelling and implementation were done on Matlab

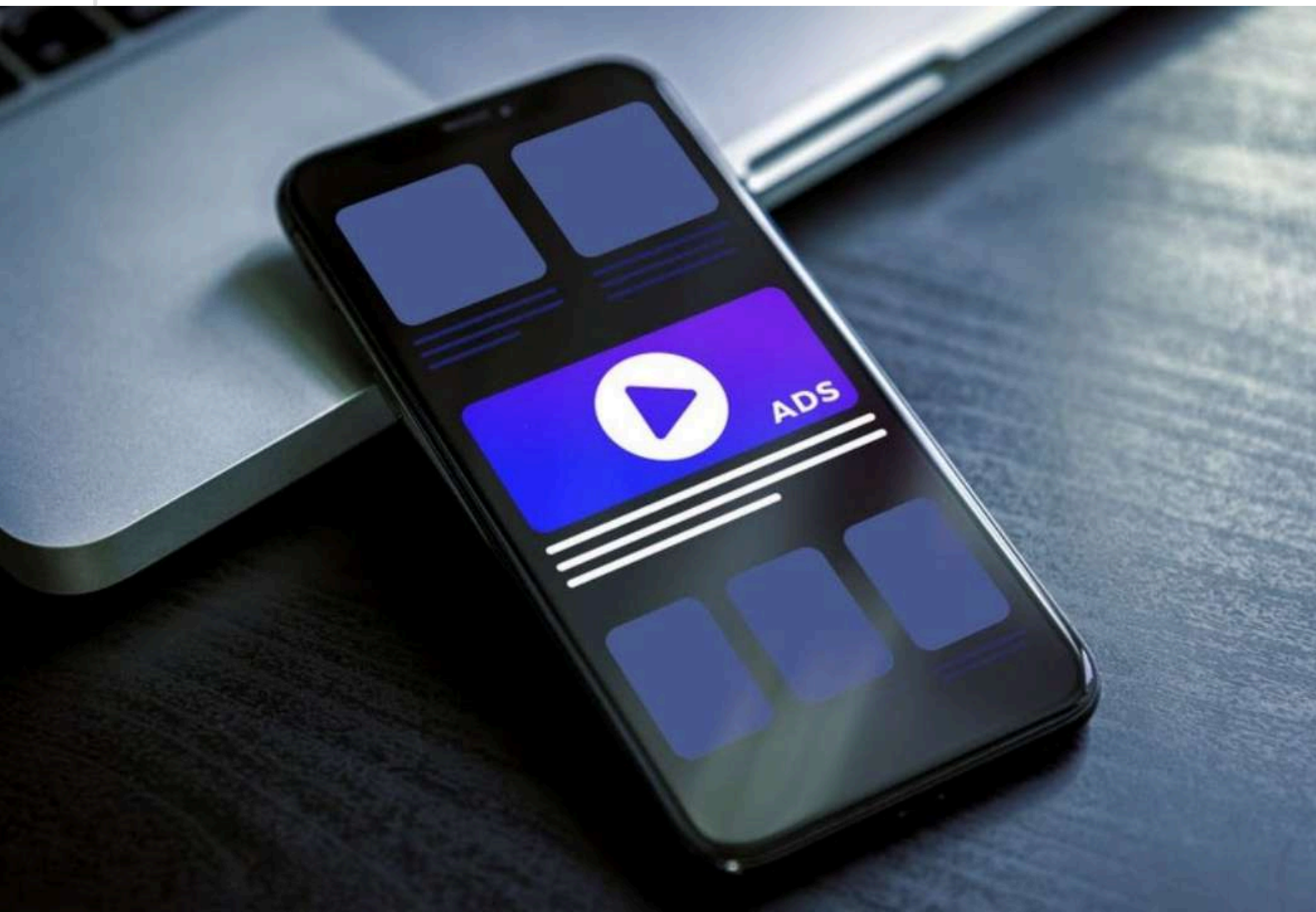
Result: Increased revenue



CASE STUDY - SMART SOLUTIONS

CUSTOMIZED AD ENGINE ALGORITHMS

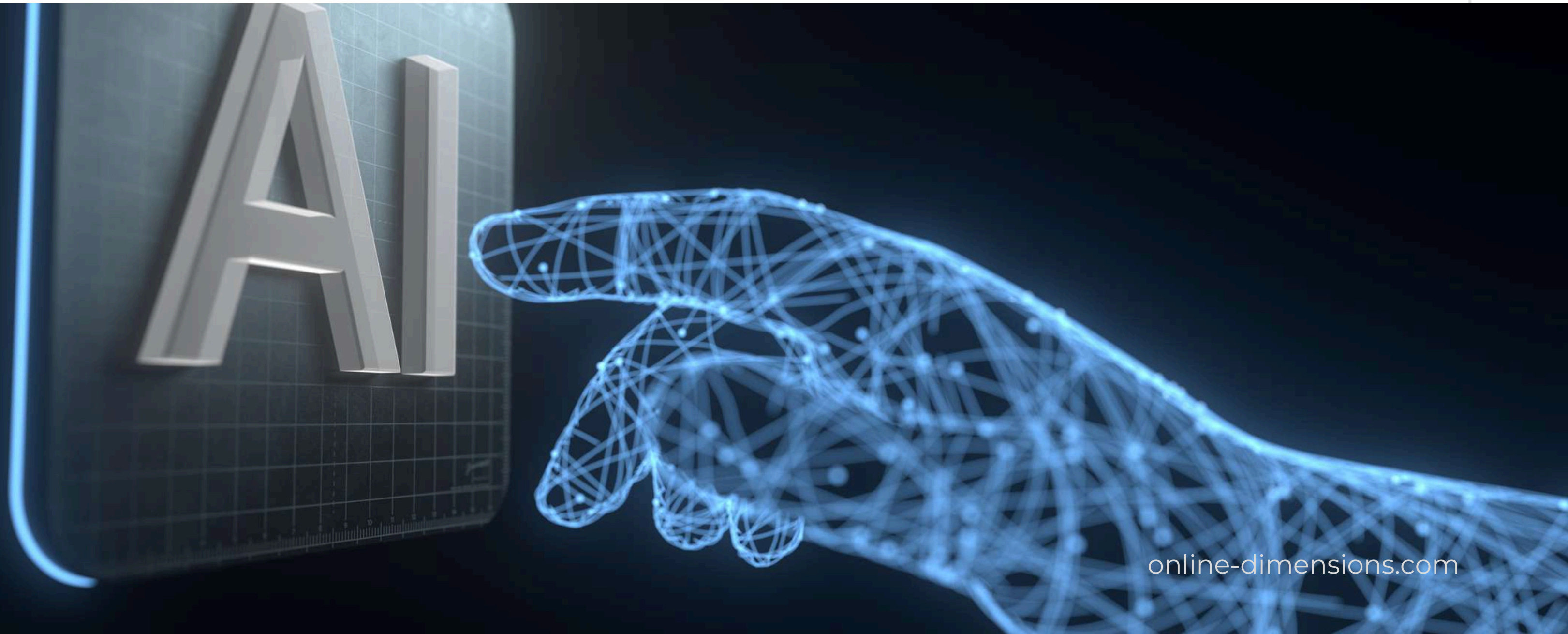
Lebanon



In a world where the importance of online marketing keeps increasing, and in accordance with the best interest of our clients, we have developed a customized ad's engine. The behaviour of this engine is similar to that of Google's ads engine in terms of customizing the ads on the client's website based on the profile of the visitor. However, we added few customizations that would significantly increase the ROI of our client:

- Client can get more returns on placing an Ad on his/her site as it is more segmented than larger engines
- Possibility to make a coalition with other sites in order to improve the reach of the ads when applicable
- People placing the ad have better visibility on the viewers
- Possibility to customize the target reach given the lower scope of users

ARTIFICIAL INTELLIGENCE



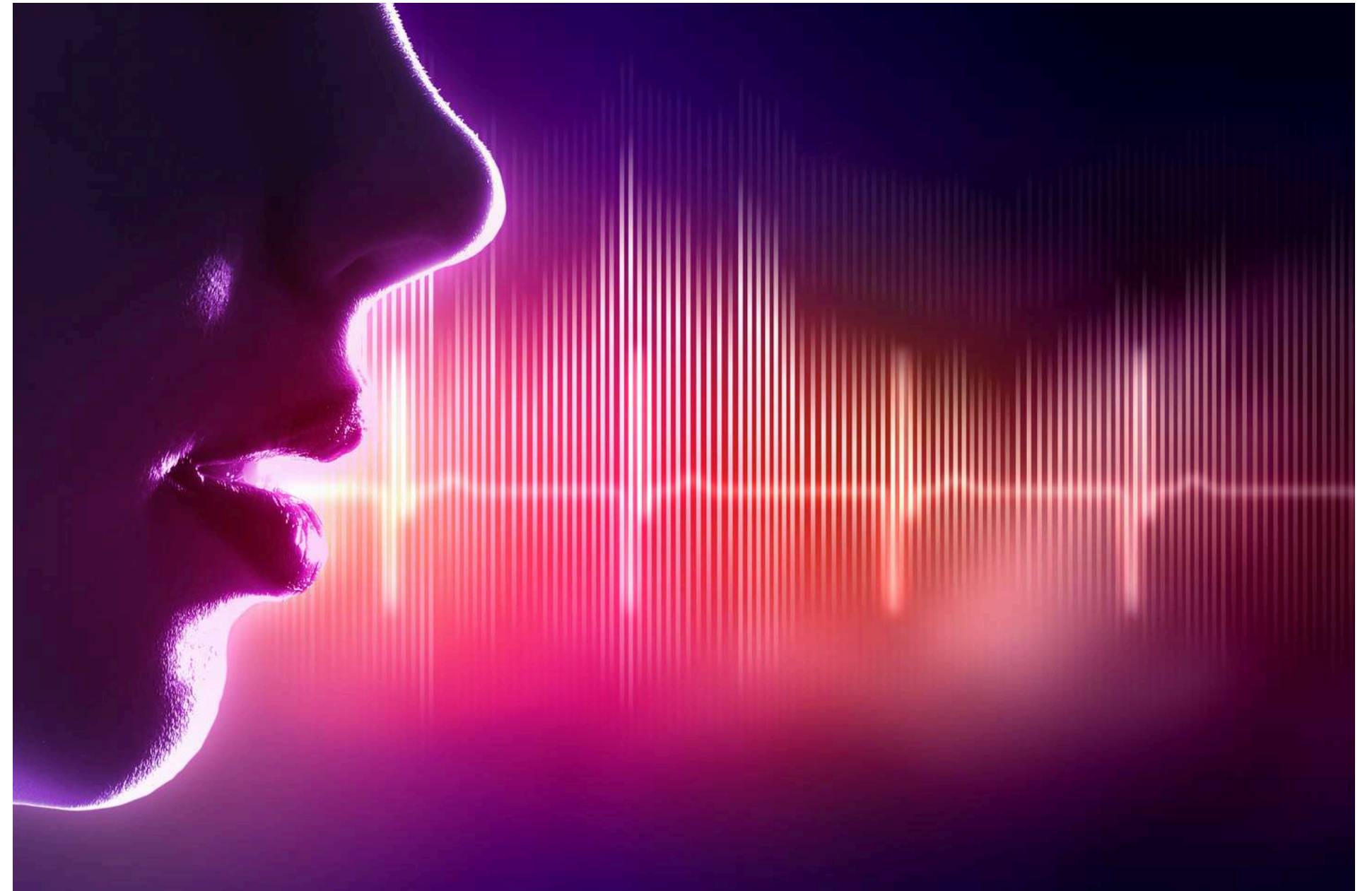
AUDIO FILE TO TEXT AI

This project consists of a portal allowing you to import an audio file and the AI will transcribe it to a text. This is a highly efficient way to do it and it saves the user the cost of hiring a transcriber. Currently, it is only compatible with English but can be adapted to handle other languages upon client request.



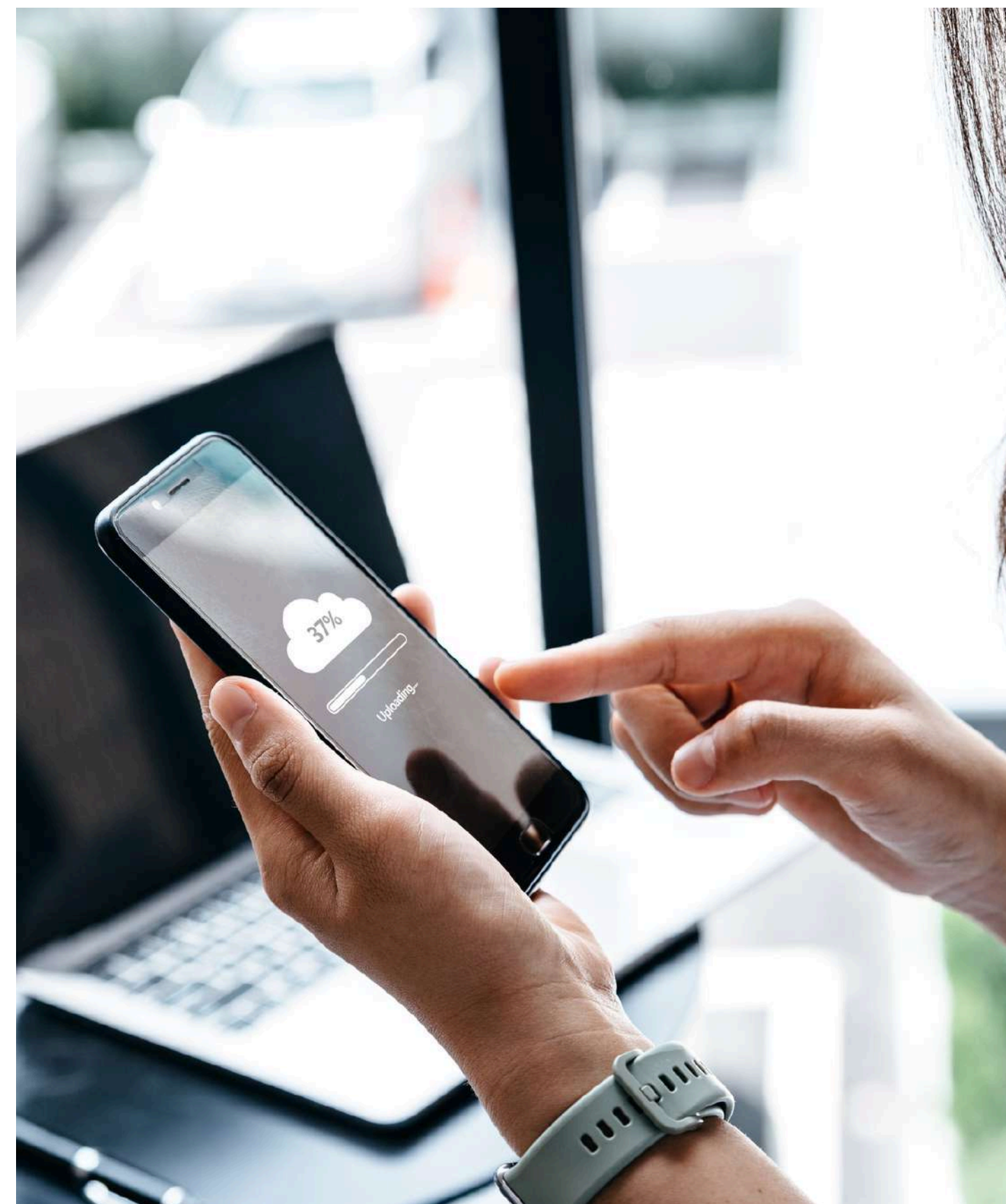
IDENTIFY ANY SOUND: AI-POWERED AUDIO ANALYSIS PORTAL

Through this AI, you can import an audio file to the portal and the AI will then analyze it and state what the sound in the audio file is.



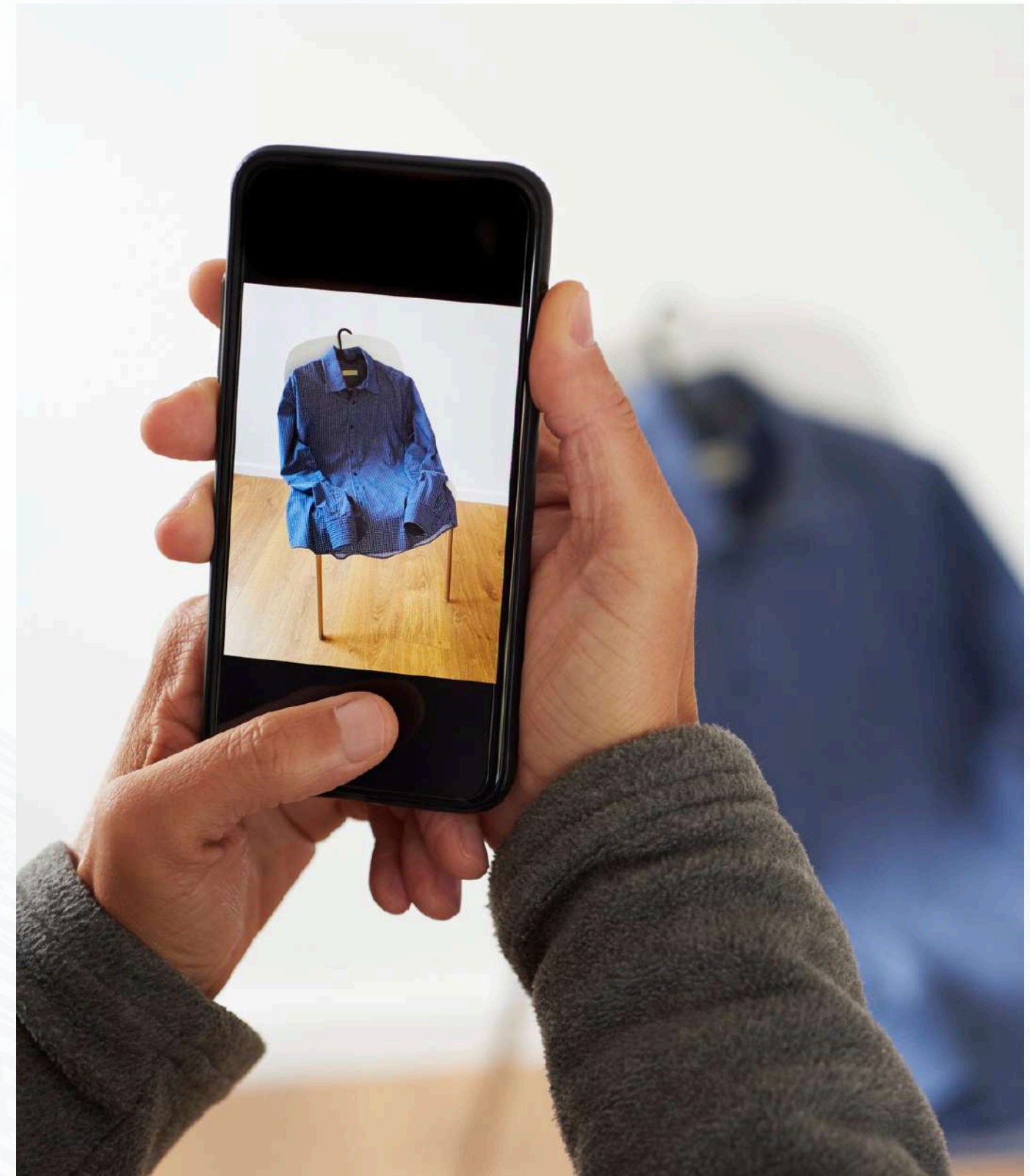
TAILOR AI - POWERED BODY MEASUREMENT FROM IMAGES

Upload a picture of a person, and our advanced AI will analyze the image to provide accurate body dimensions. Perfect for fashion, fitness, or any application that requires precise measurements without physical tools!



SNAP & FIND: AI-POWERED ITEM IDENTIFIER

This AI allows you to capture a live picture of an item and the AI will search the web to find the exact item and its description if there is any. It is optimized for supermarket items to help users get on-the-tap information on whatever item is in front of them.



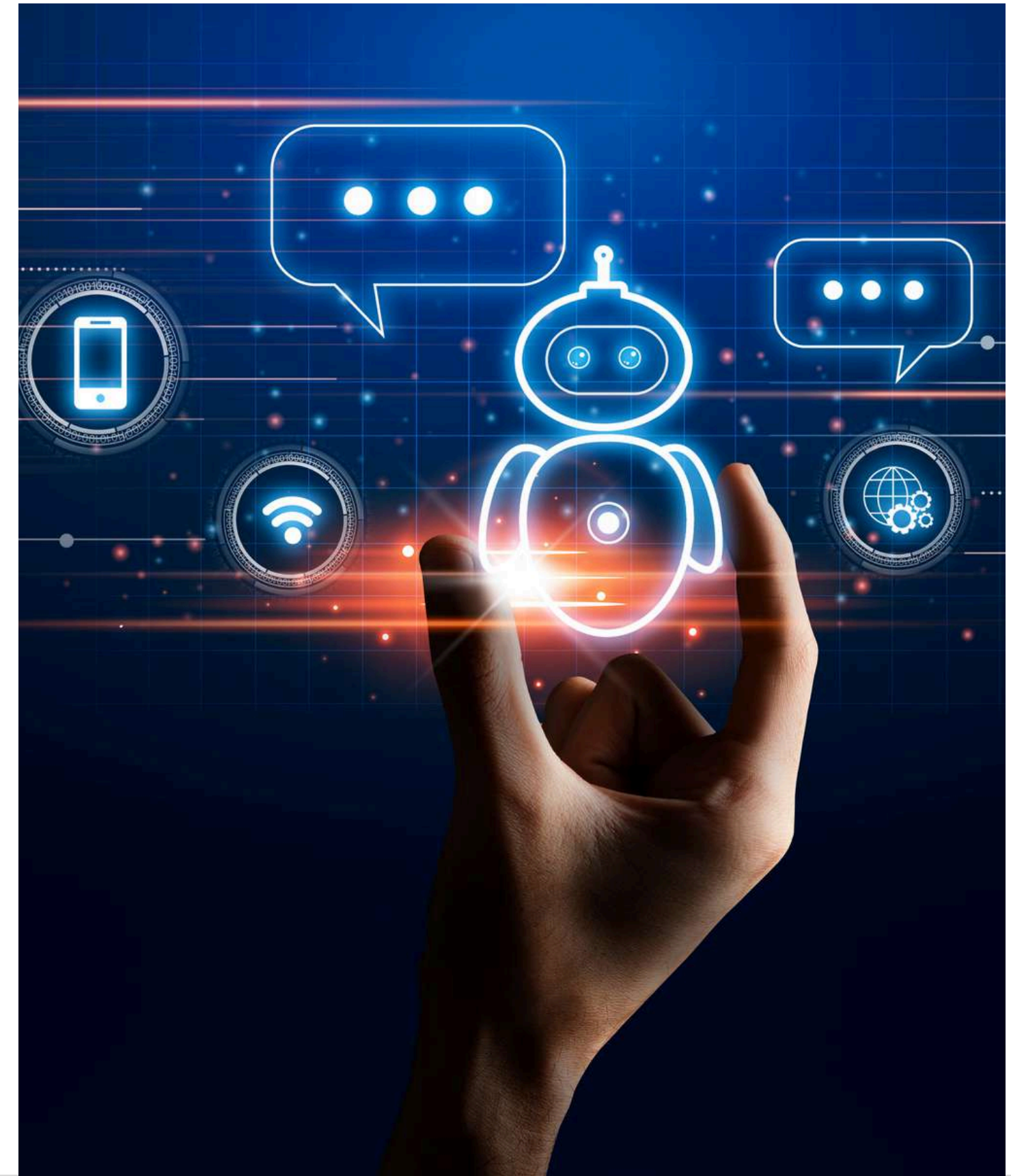
AI MOTION ANALYZER

Upload a video of a moving object, and this AI will identify the object and determine its movement direction in real-time. Perfect for monitoring, sports analysis, or tracking dynamic activities with precision!



DOCUMENT-SMART CHATBOT: YOUR AI KNOWLEDGE ASSISTANT

This is a chatbot that trains itself on whatever document you upload onto it and will then gain the ability to discuss this document with the user.



CONTACT US

Lebanon

Sin El fil 313 - Jisr El Basha - Cardinal
Sayegh Street , Lebanon

Email: info@online-dimensions.com

Phone Number: +961 78 899862

